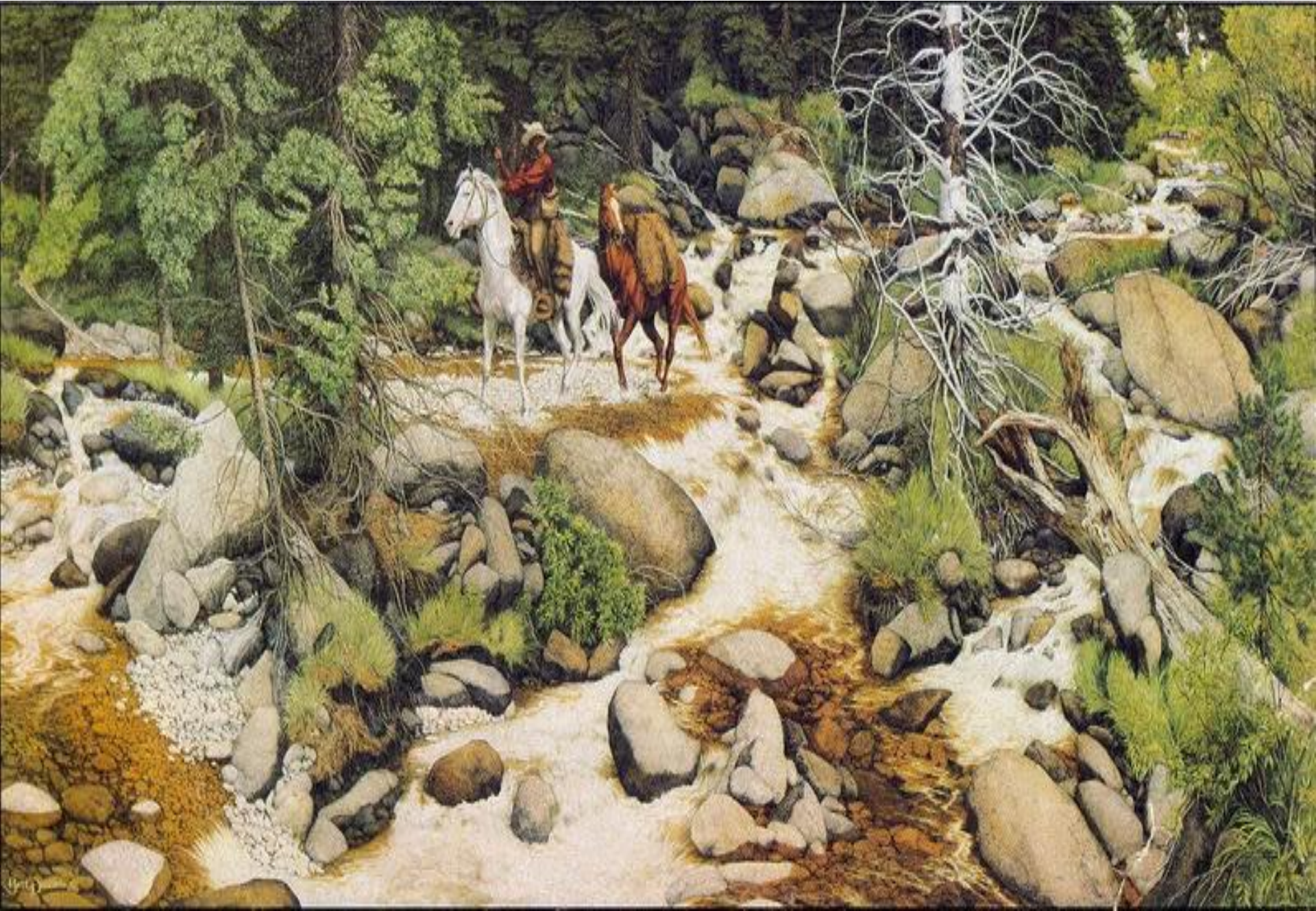
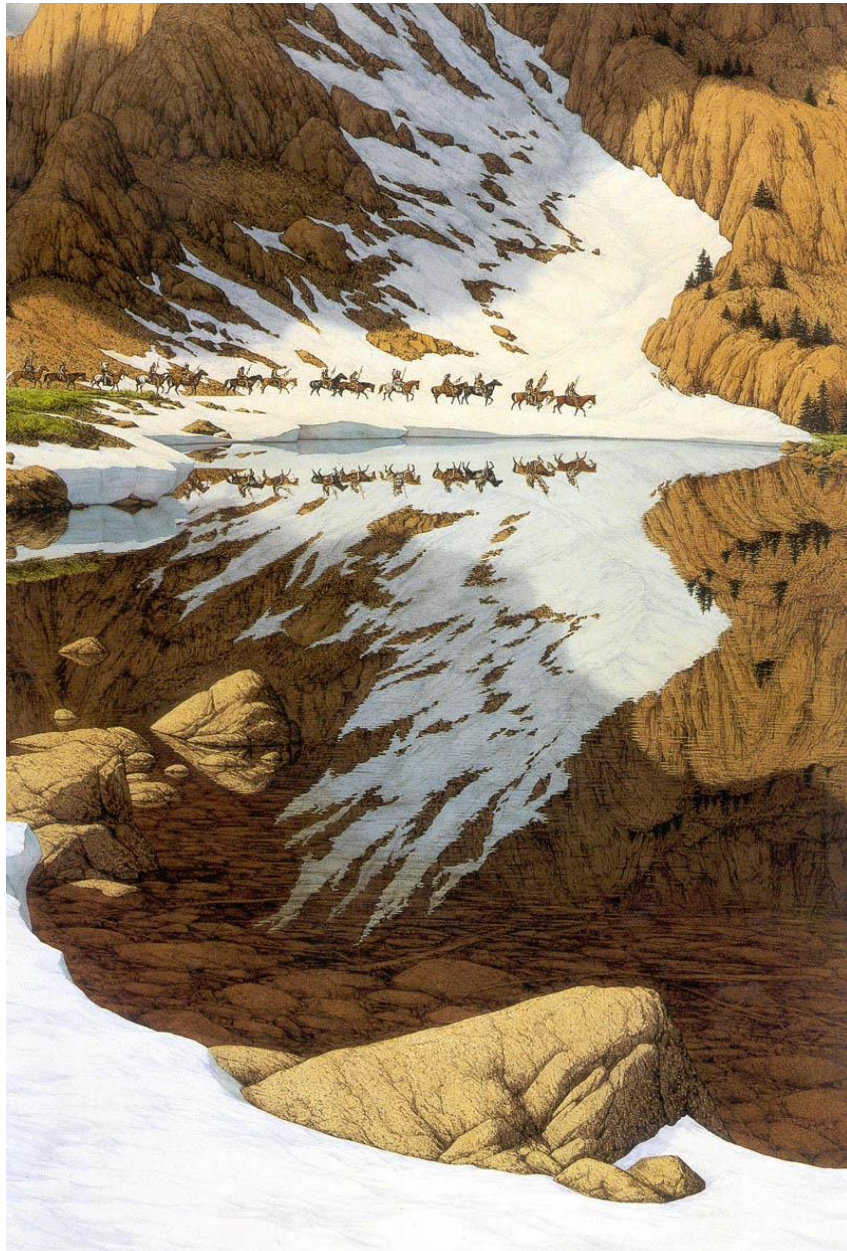


# WHAT DO YOU SEE?



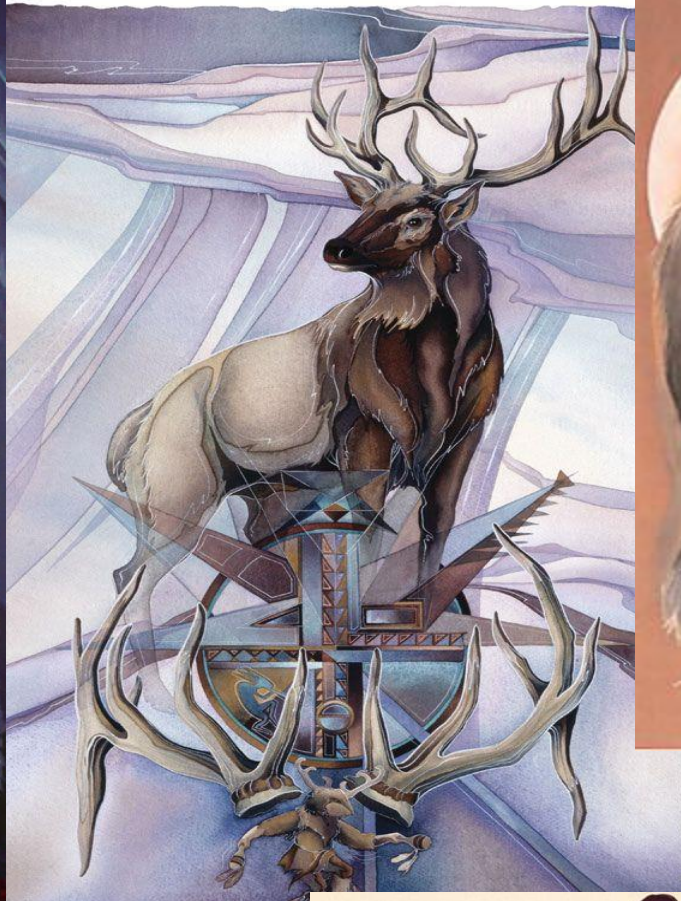
# Bev Dolittle



# SOME OF THE OLDEST ARTWORK



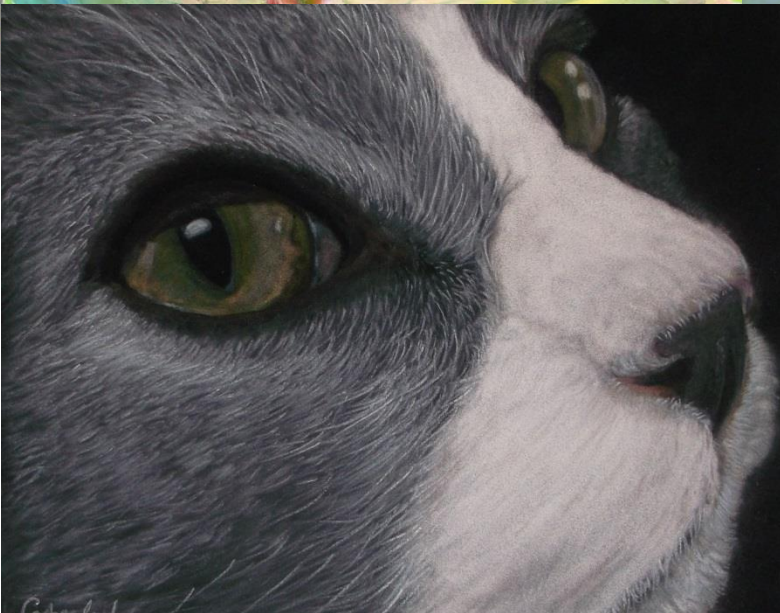
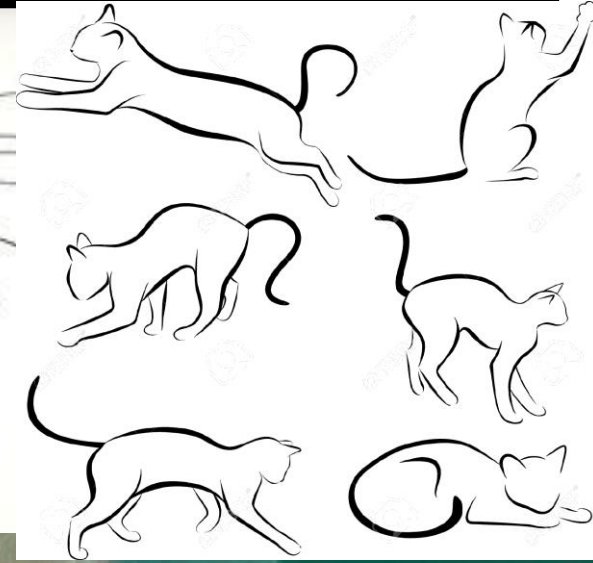
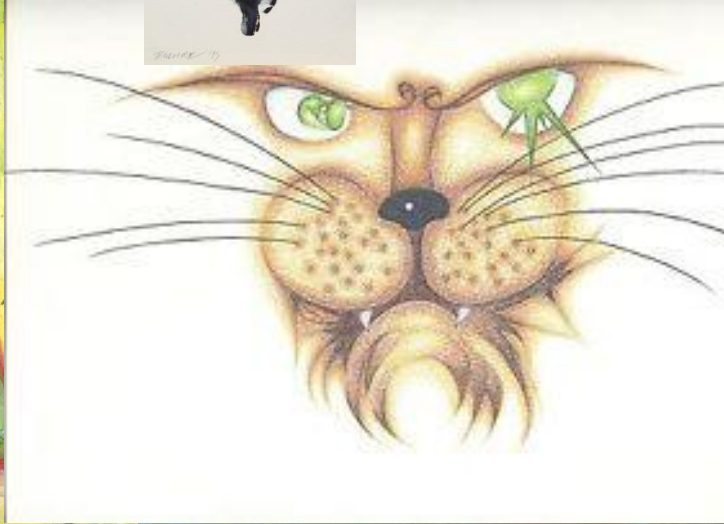
# Native American Artists



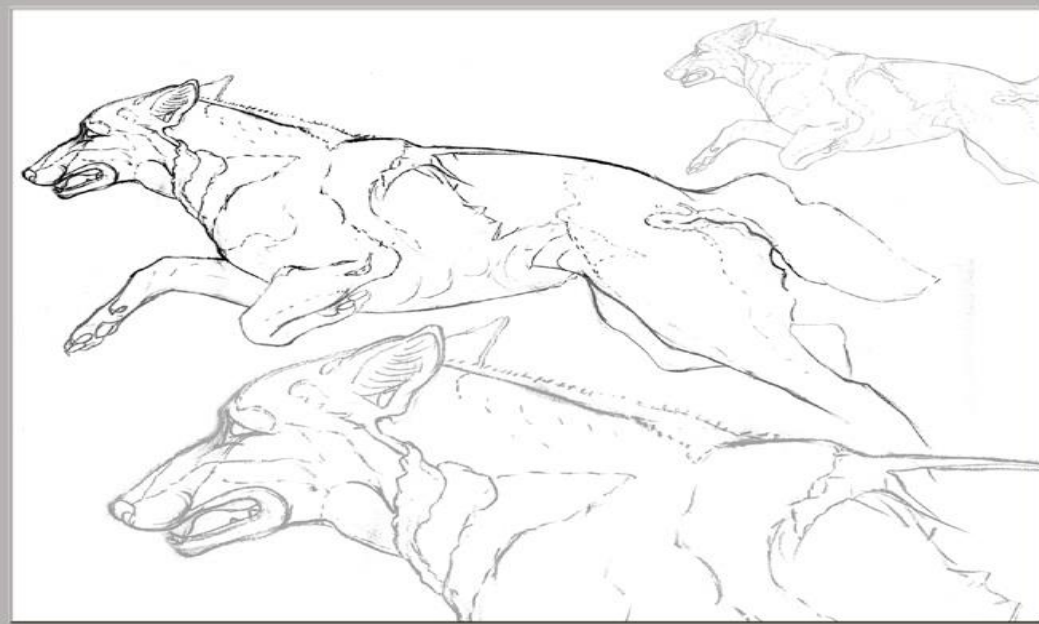
# ANIMALS OF OTHER CULTURES



# CAT ART



# WOLVES







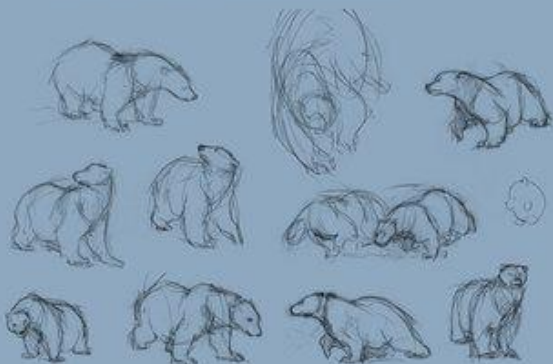
# How to Draw a Polar Bear

By Lindsay Cibola

Polar bears are large, muscular animals with short legs and powerful forelimbs. The polar bear's body is streamlined for navigating ice, water, and land. Their elongated torso and tapered head and neck are perfect for long distance swimming, while large feet give them better traction on the ice. Thick fur protects them from the cold. Try to bring out these traits in your drawing.

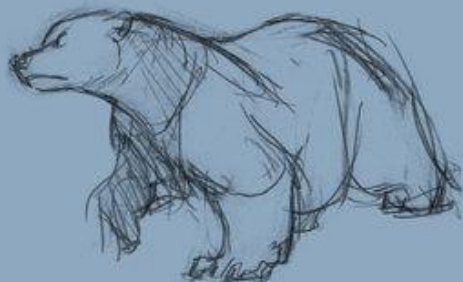


The key to drawing anything is to break it down into basic shapes. If you can draw circles and ovals, you can draw a polar bear. Don't be discouraged if your first attempt doesn't turn out exactly like the picture. Practice makes perfect, so let's begin!



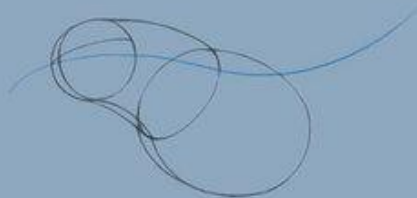
## Step 1: Brainstorm Poses

Start by sketching some thumbnail poses for your polar bear. Thumbnails are small drawings, no larger than a few inches, useful for working out ideas. Don't worry about details yet. Use this time to get to know your character.



## Step 2: Rough Pose

Select your favorite pose. This is the roadmap for your drawing. I picked this one for its strength and intensity.



## Step 3: Upper Body

Draw a curving line of action that best captures the motion of your rough pose. Sketching lightly, begin building up the bear with basic shapes: a sphere for the head, an egg for his chest. Connect them with a long tube for his neck.



## Step 4: Front Legs

Curving around the neck, draw the bear's large, muscular shoulders. From the shoulders, draw the arms, divided into upper and forearm segments. Then add the paws.



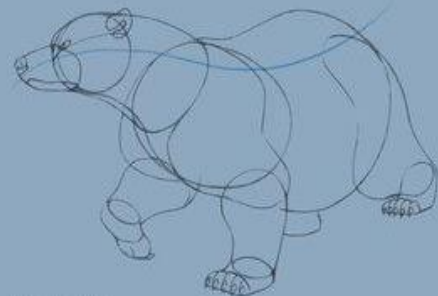
## Step 5: Head

Draw an oval eye resting on the horizontal guideline of the face. Above the eye, sketch his brow bumping out from the top of the head. From the center point of the bear's face, extend a rectangular muzzle, then add a nose and fierce mouth. Place the ear towards the back of the head, also on the horizontal guideline.



## Step 6: Lower Body

Draw a barrel shape for the rest of the polar bear's torso. Then build up the pelvis and hind legs.



## Step 7: Details

Divide each of the paws into five individual toes. Sketch a curved claw in the center of each toe. Then detail the bear's eye with the iris.



## Step 8: Refine Drawing

Tighten and darken your lines. Use broken lines to fluff up the bear's elbows, wrists, and body. Erase any construction guidelines. Fill in his nose and eyes with pencil shading.



## Step 9: Color

Now to color your bear. Polar bear fur appears white, but is actually transparent. Bring out the bear's volume with a shadow tone. Ugly blues for a cold, serious mood. Creamy yellows are another option. Add some jagged strokes for furry texture and you're done!

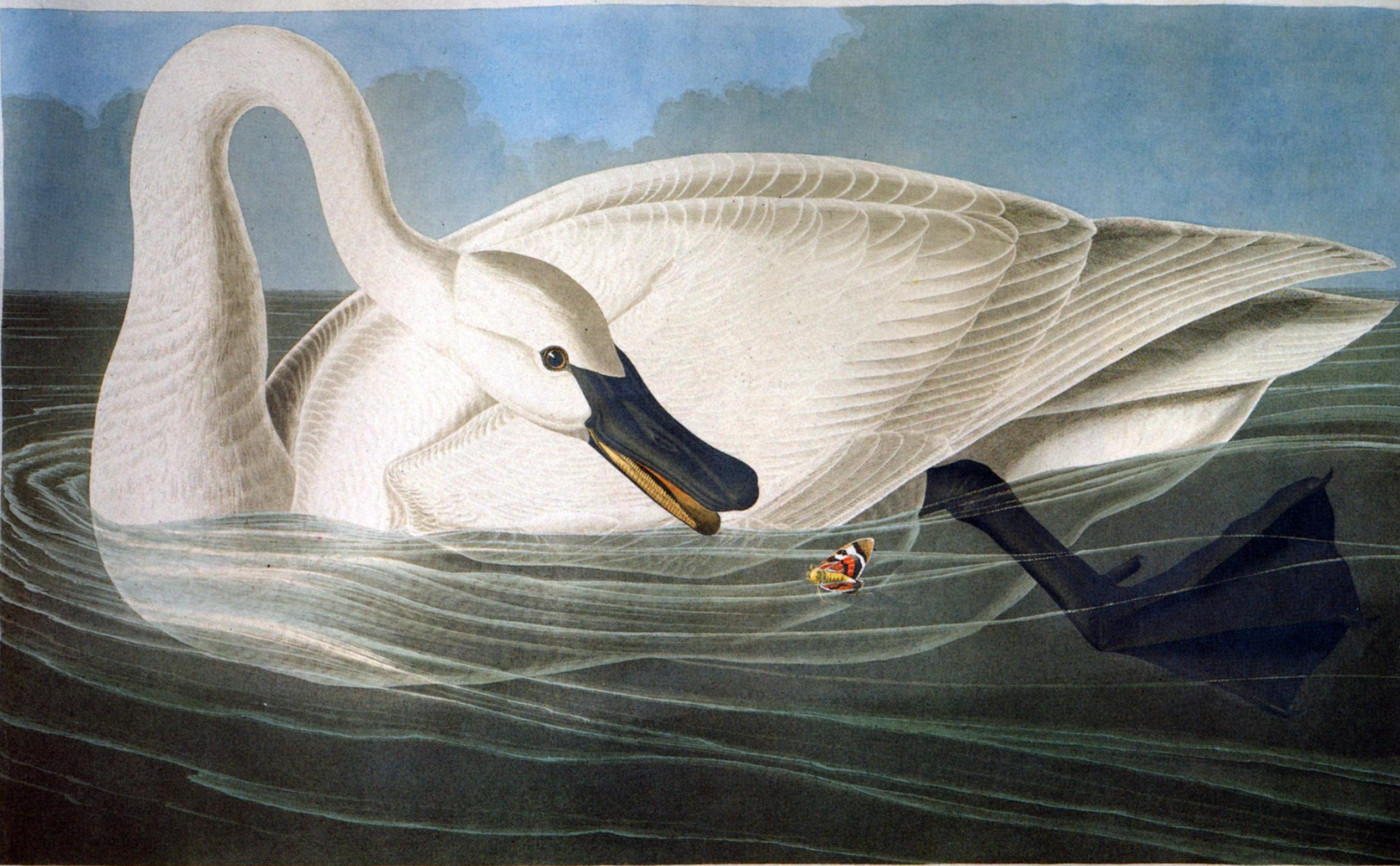
# ROBERT BATEMAN



# JOHN JAMES AUDUBON

N° 82

PLATE CCCCVI

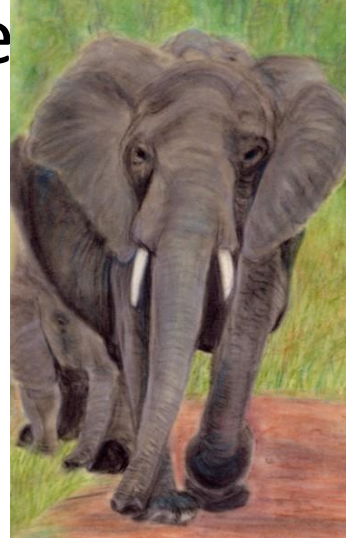


*Trumpeter Swan*  
CYGNUS BUCCINATOR  
Linn.

Engraved & Coloured by K. S. Pyle

# RESEARCH STEPS

- Pick master artists or culture- choose from list.
- Find images and place into a new album and Fill out Bio worksheet and turn in.
- Select your subject related images-animals, birds, ect... Take your own photos of pets
- Draw three thumbnail sketches- sketch out three ideas for this assignment and practice pastel techniques.



# VISUAL RESEARCH

- SELECT 15 IMAGES OF THE FOLLOWING

1. ONE FROM EACH MASTER ARTISTS
2. SKILLFUL/UNIQUE EXAMPLES OF PASTEL TECHNIQUES
3. ANIMAL/NATURE IMAGES TO INSPIRE YOUR PROJECT.  
(SUBJECT RELATED IMAGES)

4. Formative Grade



# 3 THUMBNAIL SKETCHS and Practice

## Pastle Techniques-Formative



3-value thumbnail sketch



reference photo



pastel painting



# PASTEL TUTORIALS

- <https://www.youtube.com/watch?v=jm6wo-8rJD0> Oil Pastel techniques 6:51
- <https://www.youtube.com/watch?v=9vbL-ADSsuU> Various types of pastels 4:04
- [https://www.youtube.com/watch?v=xpl9UHXsH\\_o](https://www.youtube.com/watch?v=xpl9UHXsH_o) Chalk pastel techniques 6:42
- <https://www.youtube.com/watch?v=QysfJoDhcbw> how to draw Fur 3:44
- <https://www.youtube.com/watch?v=KM8W60nZrj8> Wolf 3:33



# FINAL PROJECT REQUIREMENTS

- UNIQUE/CREATIVE IDEA-WILDLIFE/NATURE THEME
- FOLLOWS THE THREE GUIDELINES OF COMPOSITION
- USE ALL FOUR PASTEL TECHNIQUES
- SHOWS FORM/PROPORTION/3-D QUALITIES IN ARTWORK

