

# LANDSCAPE PAINTING





# Albert Bierstadt 1830-1902

*Among the Sierra Nevada Mountains, California, (1868*



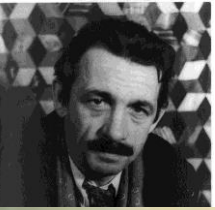


# Modern Day Poster Artist



- Bierstadt was hired by the American government to help advertise moving out west was very desirable. How do these painting help advertise moving to America is worthwhile?





# Thomas Hart Benton 1889-1975



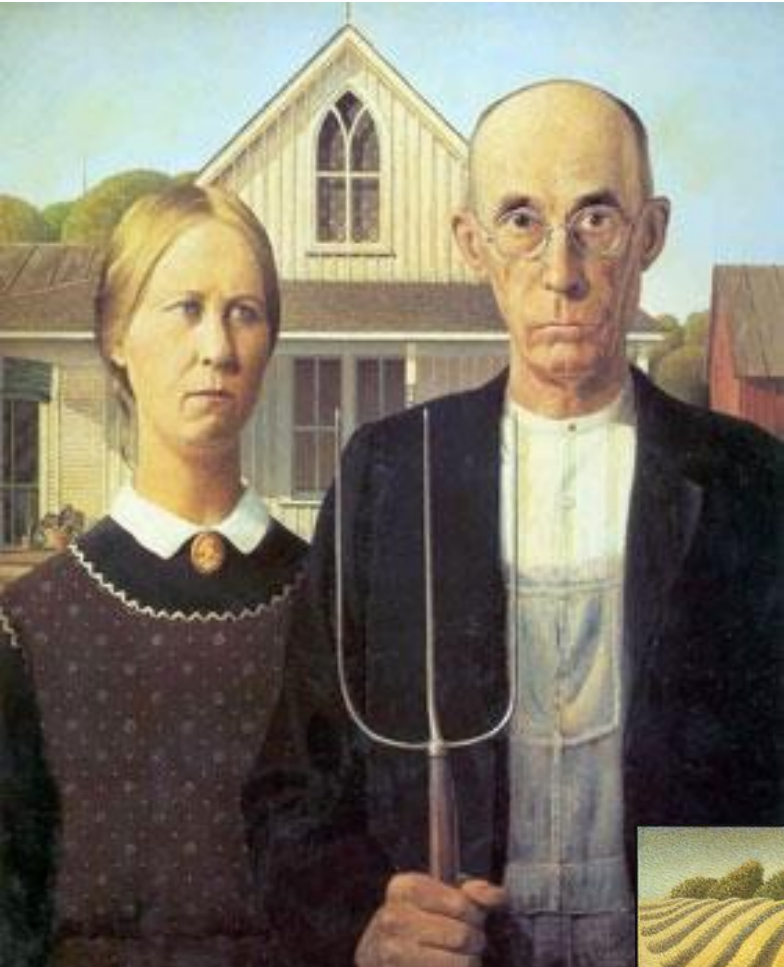


# “JULY HAY”





# GRANT WOOD 1891-1942





# “Near Sundown”



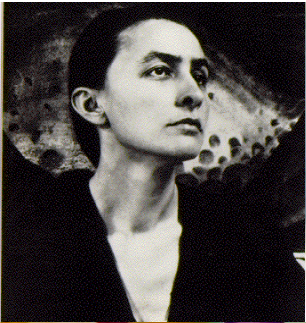


# The Midnight Ride of ?





# Georgia O'Keeffe 1887-1986





# MORE OF O'KEEFFE'S PAINTINGS



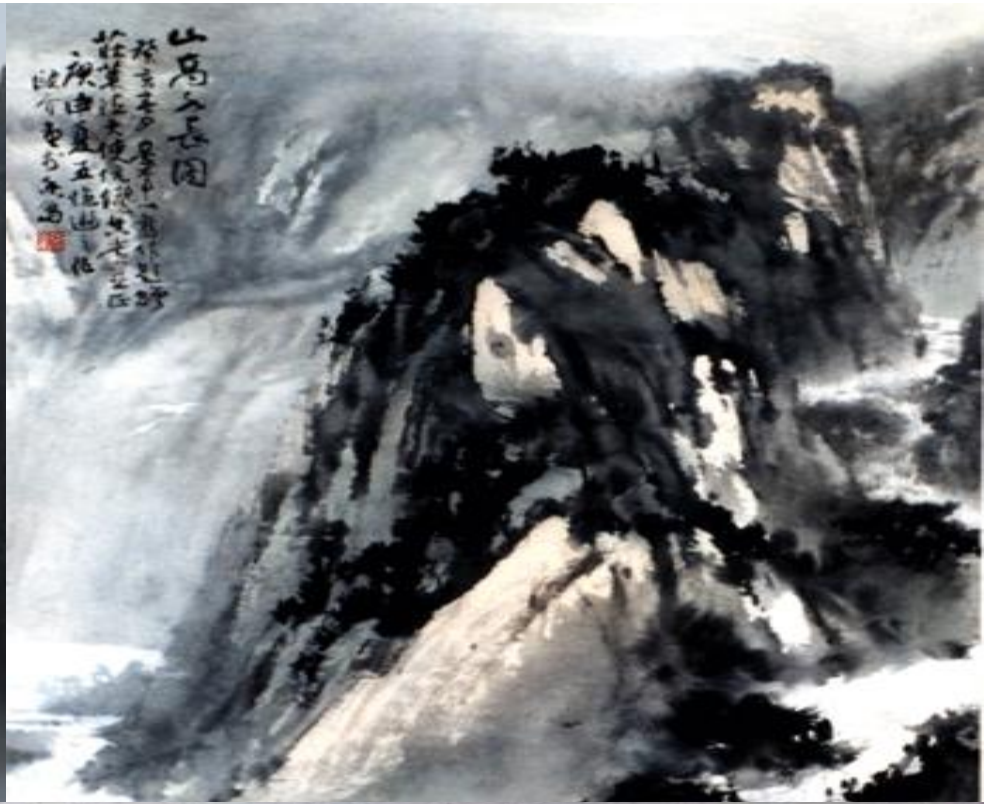


# A Different kind of Land





# Artist around the world paint their surroundings



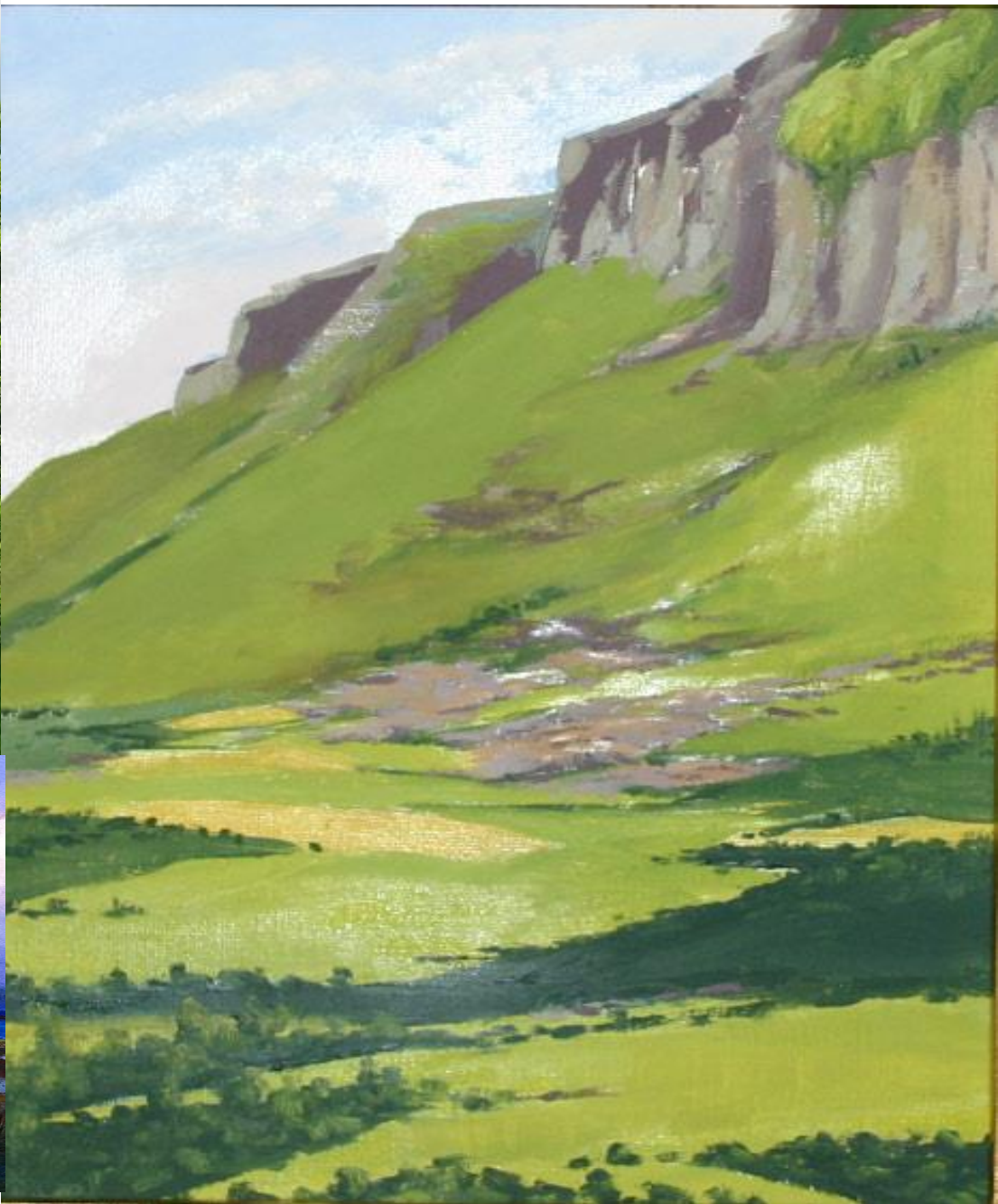


# Other World Landscapes





# Guess Where?









# PARTS OF A LANDSCAPE

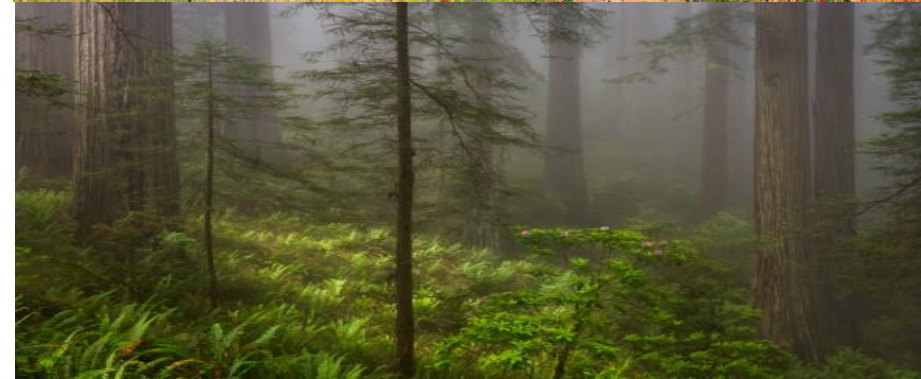
- FORE GROUND, MIDDLE GROUND AND BACKGROUND





# 5 DEEP SPACE TECHNIQUES

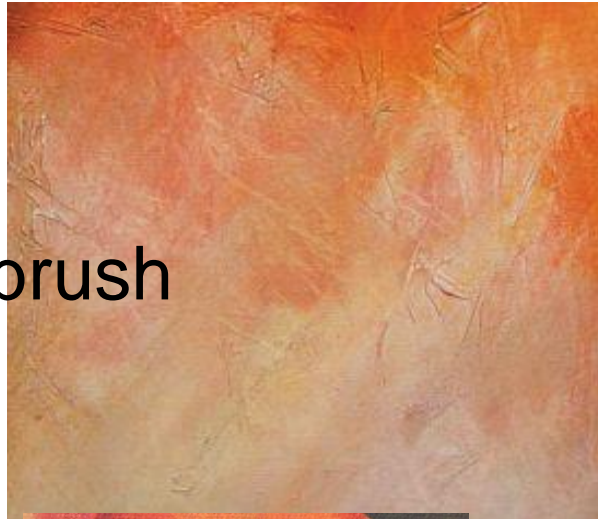
- Overlapping
- Place object higher for distance and lower for foreground
- Objects in the distance get smaller
- Objects closer get more detailed
- Colors are brighter/vivid in foreground and fade/darker in the distance





# REVIEW PAINTING TECHNIQUES

- FLAT COLOR
- WASH
- DRY BRUSH-brush strokes
- BLENDING
- LOOSE BLENDING
- STENCILING
- SPLATTERING
- OVERLAPPING





# Steps for project

- Pick your theme/place
- Do the research
- Find painting images that show effects you want
- Draw your rough draft
- Lightly sketch out design for landscape
- PARTNER/TEACHER feedback
- Revise your design
- Start your painting-practice techniques in sketchbook or separate paper





# Requirements for Landscape Painting

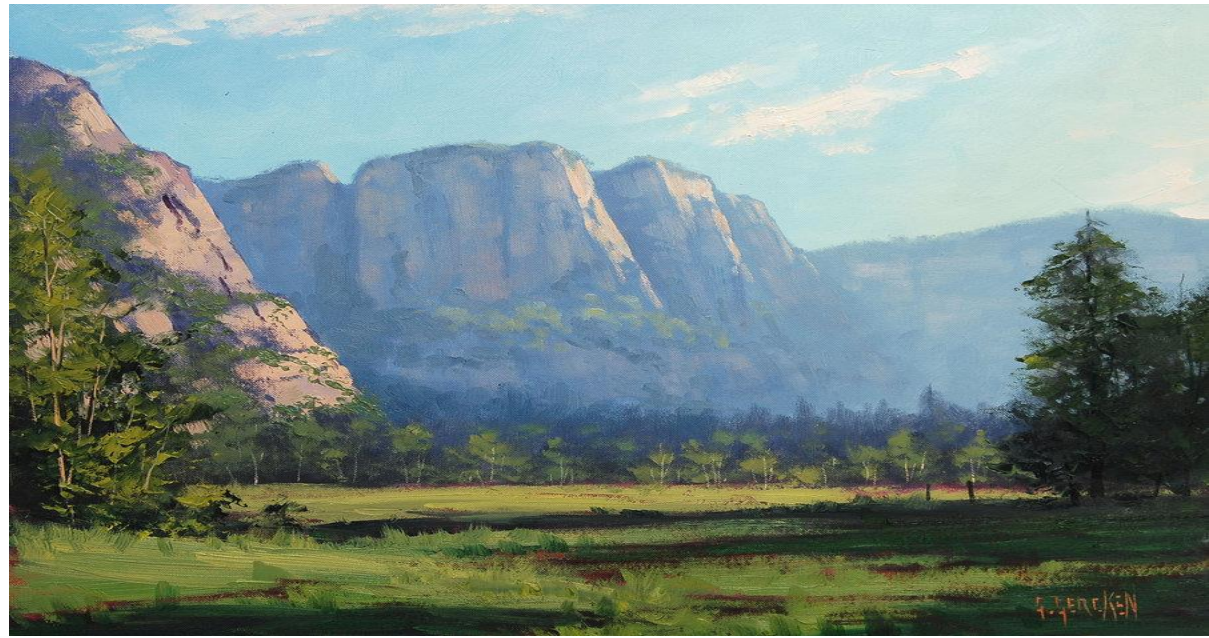
1. Design must be original and follow FG, MG, BG

2. Must use all 5 deep space techniques

3. Follow three guidelines of composition

1. Must use Blending, Effectively use the painting techniques to make it look real or visually powerful

2. 😄 No sun in the corner





# EXAMINE THE PAINTING EFFECTS





# TIPS

- Paint the sky first
- Paint the ground next
- Paint the structure first, then go for the detail
- Start with lighter colors first then get darker as you go
- Work the whole painting, not just small parts at a time





# HEALY ALASKA





# Order of Painting

1. Sky
  - Work loose to start
2. Clouds
  - Have three values in each subject to show form.
3. Ground base color
  - Use warm colors for high lights
4. Mountains
  - Cool colors for shadows
5. Water/roads
  - Paint the details last.
6. Fields, grass, rocks
7. Add shadows to show light source.
8. Details painted last.





# Youtube painting demos SKY'S

- <http://www.youtube.com/watch?v=zcr4vUpxihY&feature=fvsr> sky #1
- <http://www.youtube.com/watch?v=YCZObx eLU58> sky #2
- <http://www.youtube.com/watch?v=Qe33o8 ezVfl> sky #3
- Try other youtube video's to learn other parts of landscape like trees, waterfalls, grass





# PAINTING VIDEOS

- <http://www.youtube.com/watch?v=hRa5VhrbS LY&feature=related> bob ross time lapse
- <http://www.youtube.com/watch?v=a8HBuVnC FmY> terry's mountains
- <http://www.youtube.com/watch?v=IE7iBna59e k> terry's trees
- <http://www.youtube.com/watch?v=qCoetuym DGY&feature=related> cherry tree
- <http://www.youtube.com/watch?v=bK4seuWpl tU> painting in steps



# PAINTING VIDEOS

- [http://www.youtube.com/watch?v=kB2idl\\_q728&feature=related](http://www.youtube.com/watch?v=kB2idl_q728&feature=related) scott christensen
- <http://www.youtube.com/watch?feature=endscreen&NR=1&v=RgNQjbZUz-c> reflections
- [http://www.youtube.com/watch?v=1OonJdmFF\\_I&feature=related](http://www.youtube.com/watch?v=1OonJdmFF_I&feature=related) seascape details
- <http://www.youtube.com/watch?v=8X4LQyDQpP4> pine trees
- <http://www.youtube.com/watch?v=wm8ra5a7VI0> pine tree #2



# PAINTING VIDEOS

- [http://www.youtube.com/watch?v=iyeA6ST\\_sVE&feature=related](http://www.youtube.com/watch?v=iyeA6ST_sVE&feature=related) barn
- <http://www.youtube.com/watch?v=y6BqilzCC80&feature=related> water
- <http://www.youtube.com/watch?v=0ZwitchJxsk> sea-scape



# Painted Landscapes





# Which one does your painting look like?



1 2 3 4 5 6 7 8 9 10



**EFFORT IS IMPORTANT  
BUT NOT AN**

**INDIACATION OF  
ACCOMPLISHMENT**

**proof is in the painting!**

