



Claude Monet 1904

WHAT IS GOING ON?



IMPRESSIONISM



IMPRESSIONISM

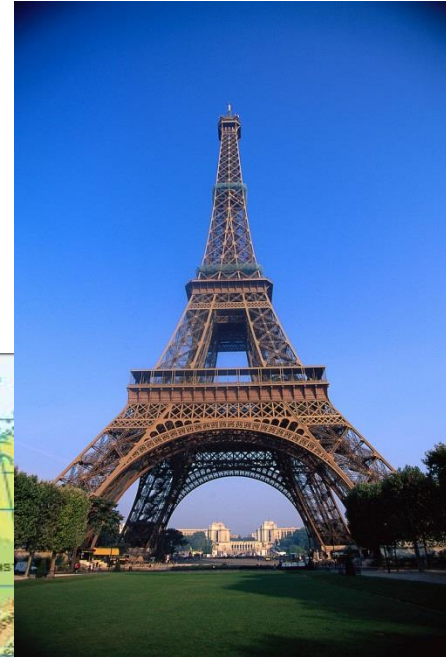
- **WHEN**

- A style of art developed at the end of the 1800's. 1870-1910's

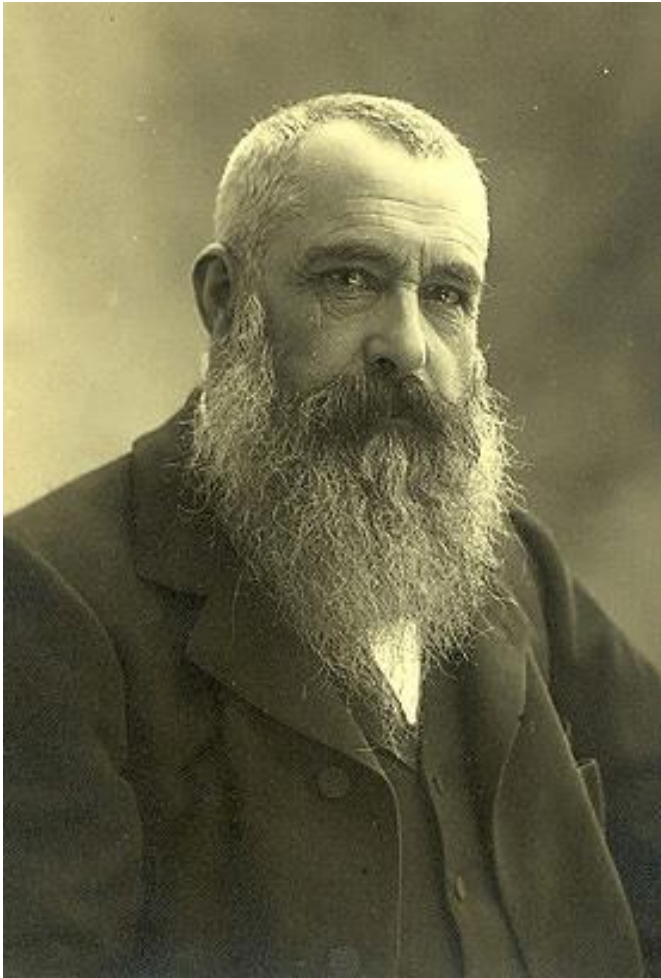


WHERE?

- **FRANCE**

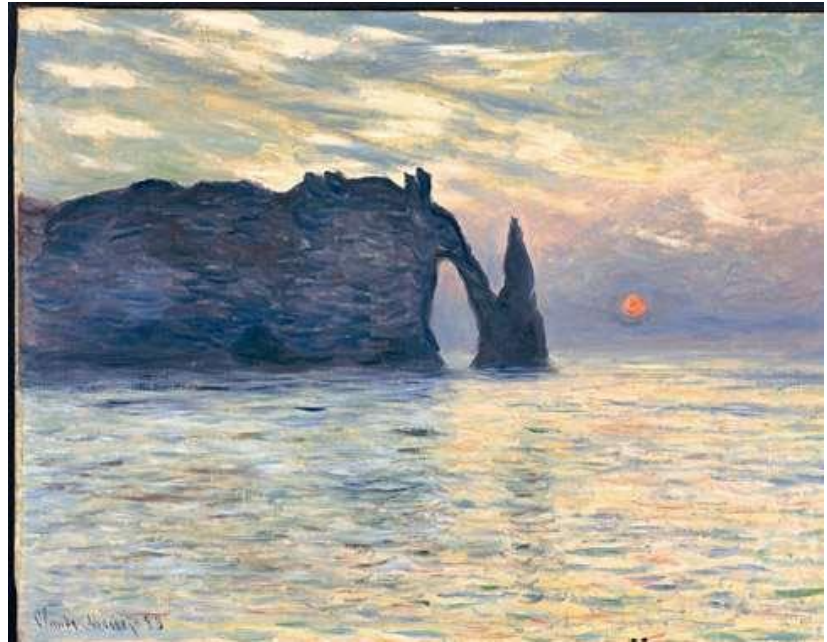


IMPRESSIONISM



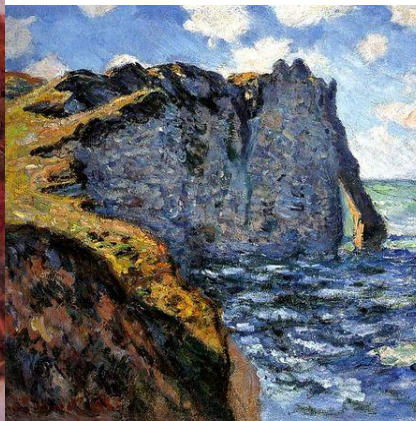
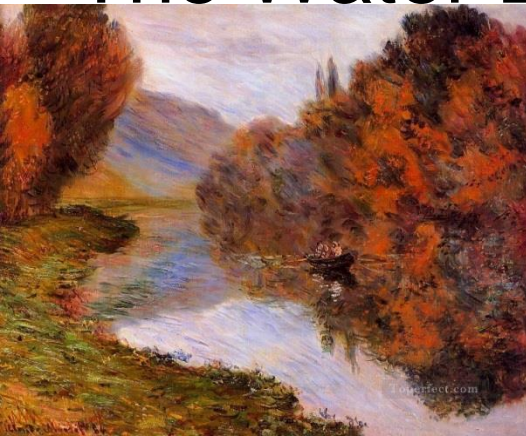
- WHO

- CLAUDE MONET



CLAUDE MONET

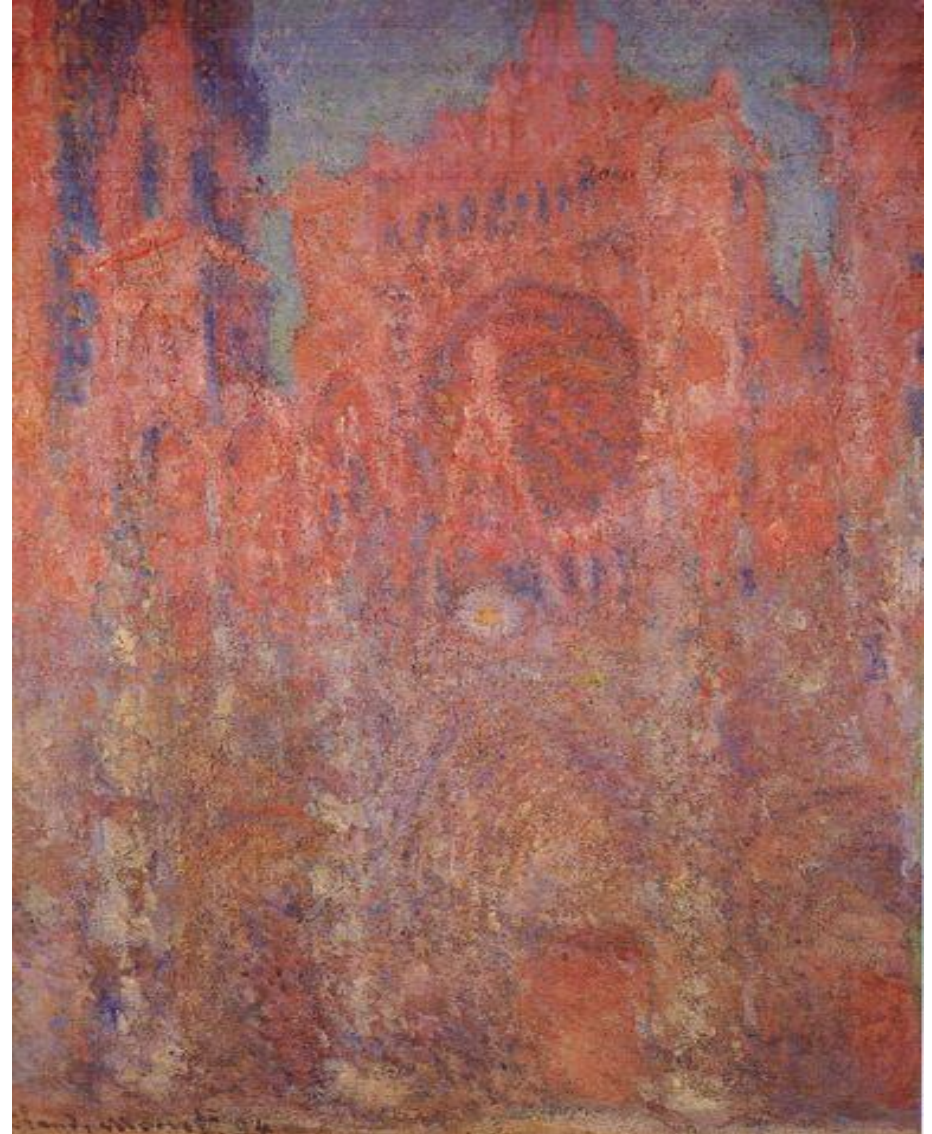
- FATHER OF IMPRESSIONISM
- BORN In Paris France November 14, 1840
- Died in Giverny, France
- December 5th 1926. At age 86
- Was the founder of Impressionism
- Painted many famous works, Like...
- The Water Lilies series, Haystacks, and



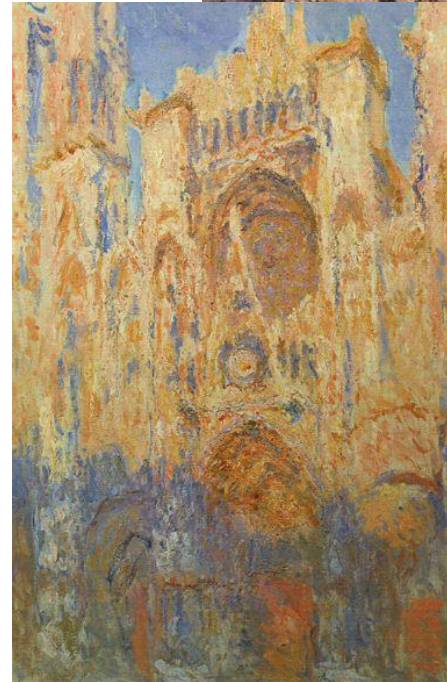
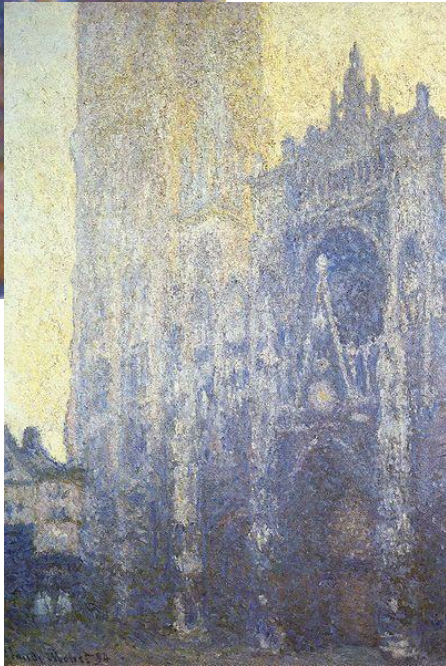
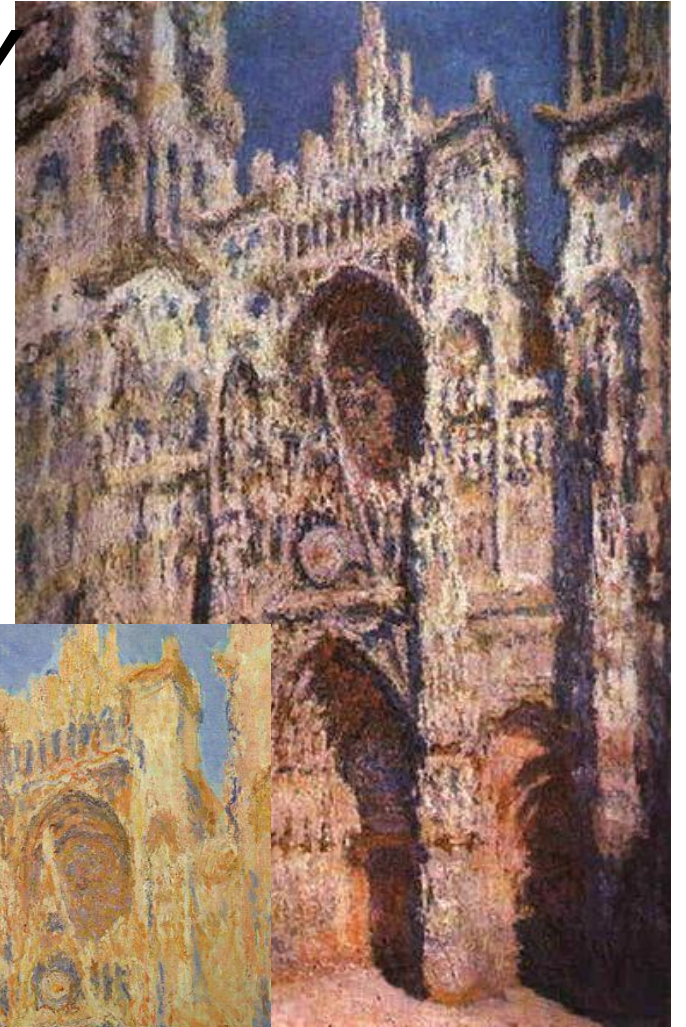
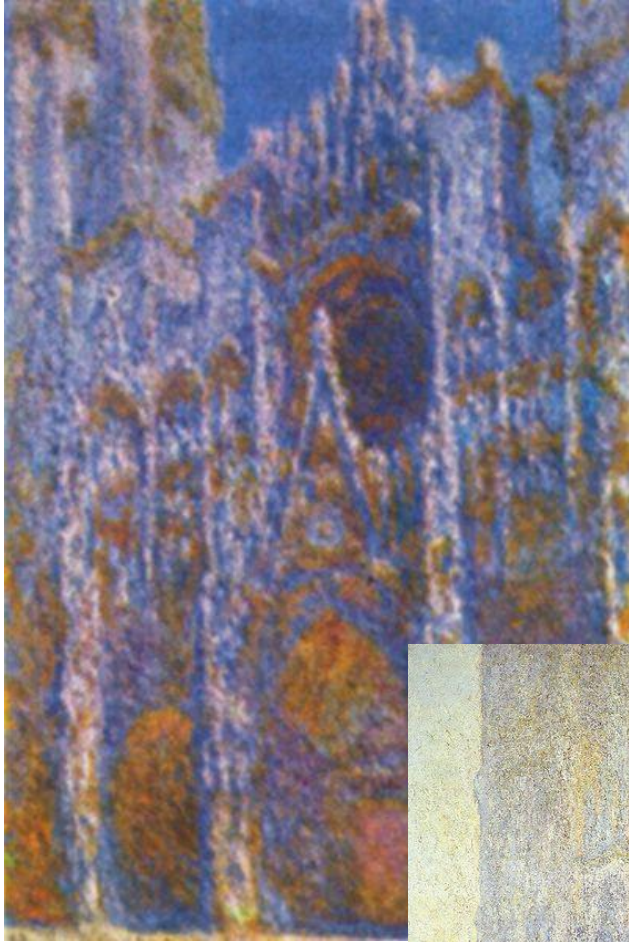
EXAMPLES OF HIS WORK



ROUEN CATHEDRAL



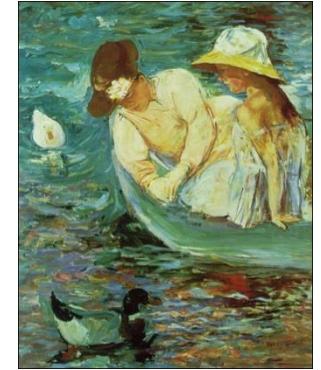
PAINTINGS OF DIFFERENT TIMES OF DAY



OTHER ARTISTS



- Pierre Auguste Renoir



- Mary Cassatt

- Edouard Manet



- John Singer Sargent

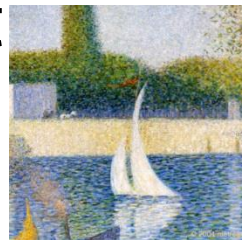
- Edgar Degas



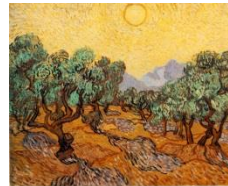
- Paul Gauguin



- Georges Seurat



- Vincent Van Gogh



- Paul Cezanne

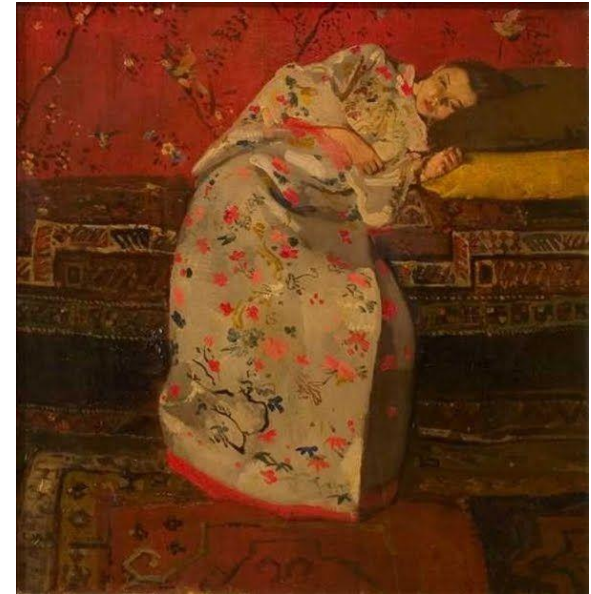


- Camille Pissarro

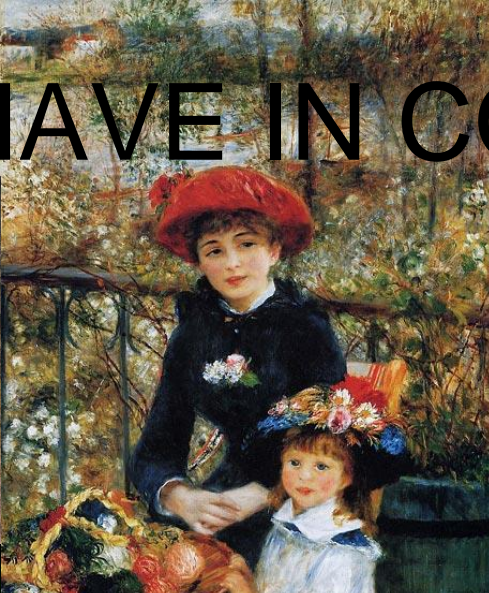


INFLUENCES

- Invention of the camera
- Invention of the paint tubes
- Trade with the Orient

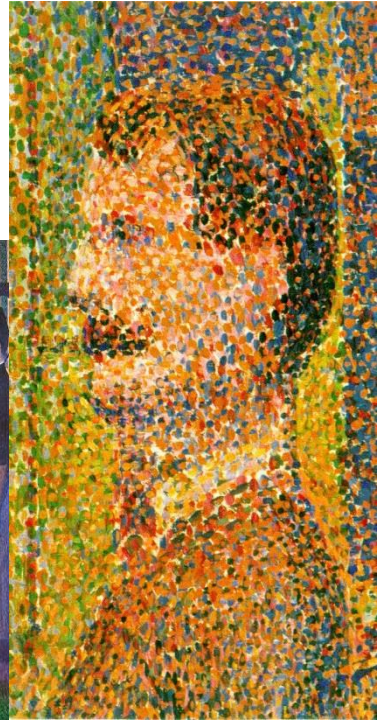
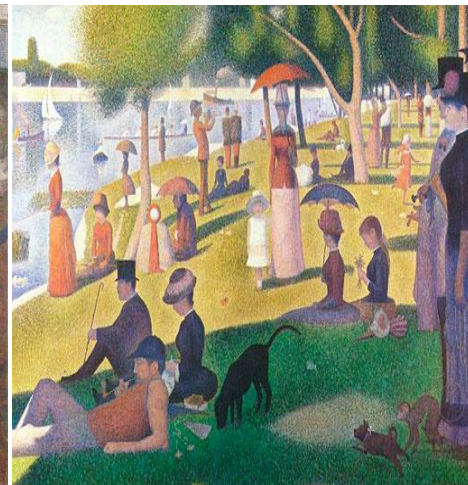
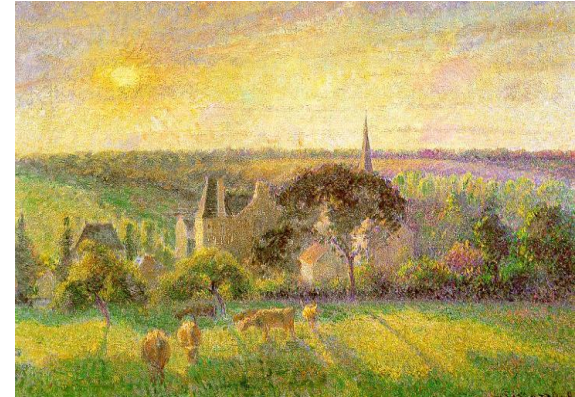


WHAT DO THEY HAVE IN COMMON?



CHARACTERISTICS OF THE IMPRESSIONISM STYLE

- EFFECTS OF LIGHT
- BRIGHT/PASTLE COLORS
- OUTDOOR SCENES
- DABS OF PAINT NEXT TO OR ON TOP OF EACH OTHER (MORE LOOSE)
- NO BLACK, USED INDIGO BLUE INSTEAD.



LOOK HOW THEY ARE USING BRUSH STROKES AND
COLOR!

