

GREEK POTTERY



Common Shapes and Comparative Sizes



Amphora



Pelike



Volute Krater



Loutrophoros



Calyx Krater



Column Krater



Bell Krater



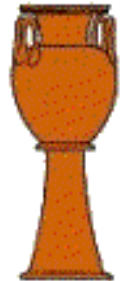
Stamnos



Psykter



Hydria



Lebes Gamikos



Lebes



Lekythos



Squat Lekythos



Oinochoe



Kantharos



Kylix



Stemless Kylix



Skyphos



Aryballos



Alabastron



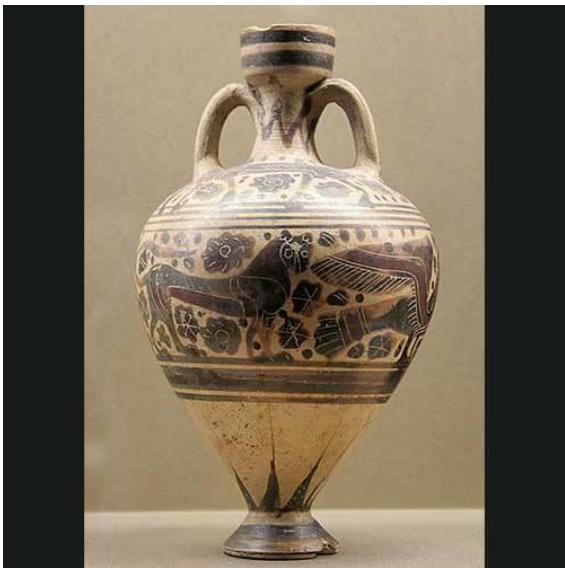
Pyxis

POTTERY TEACHES US GREEK/ROMAN HISTORY



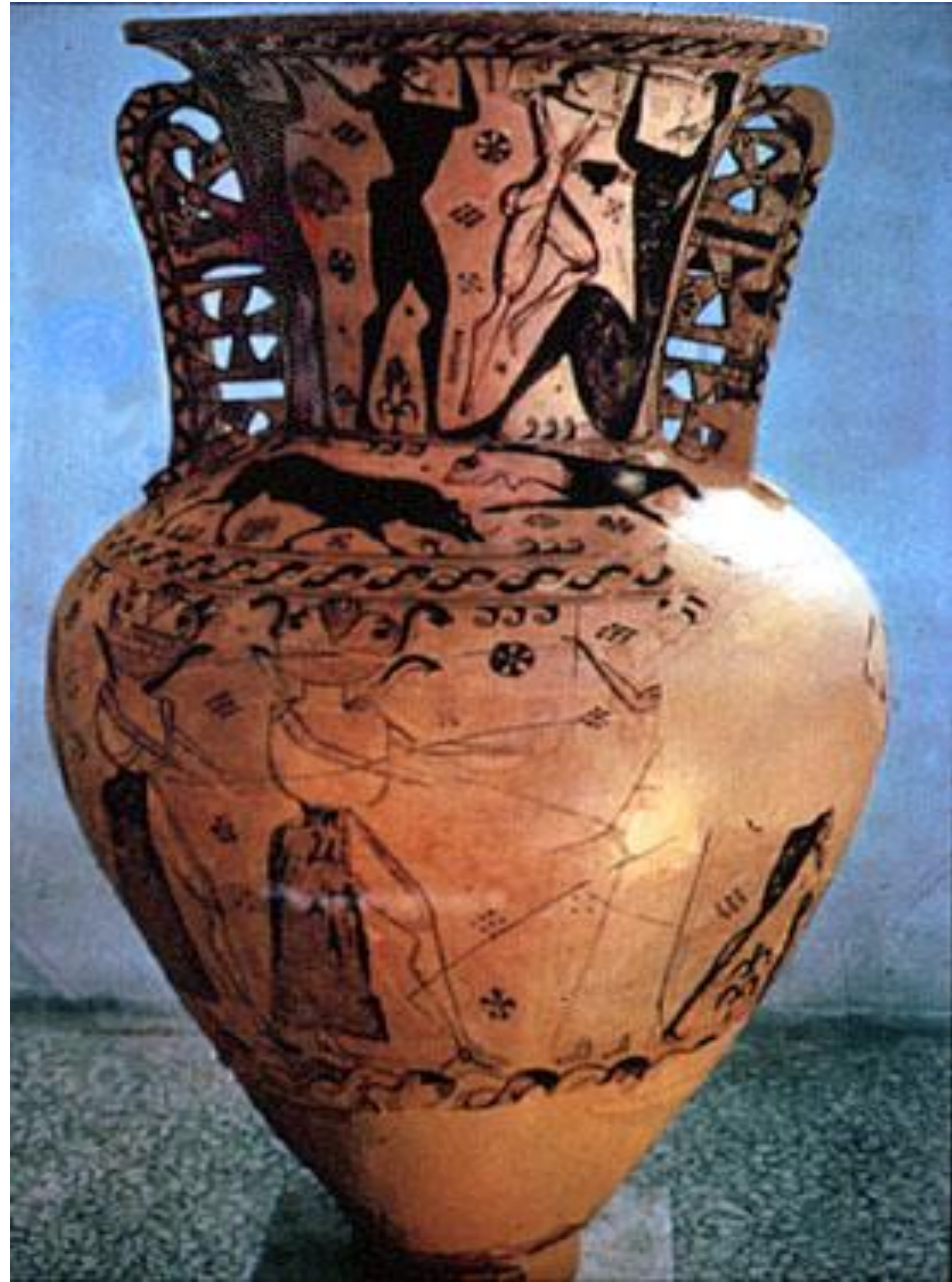
THREE TIME PERIODS

- ARCHAIC- 700BC-490BC
- CLASSICAL- 480BC-323BC
- HELLENISTIC- 323BC-30BC

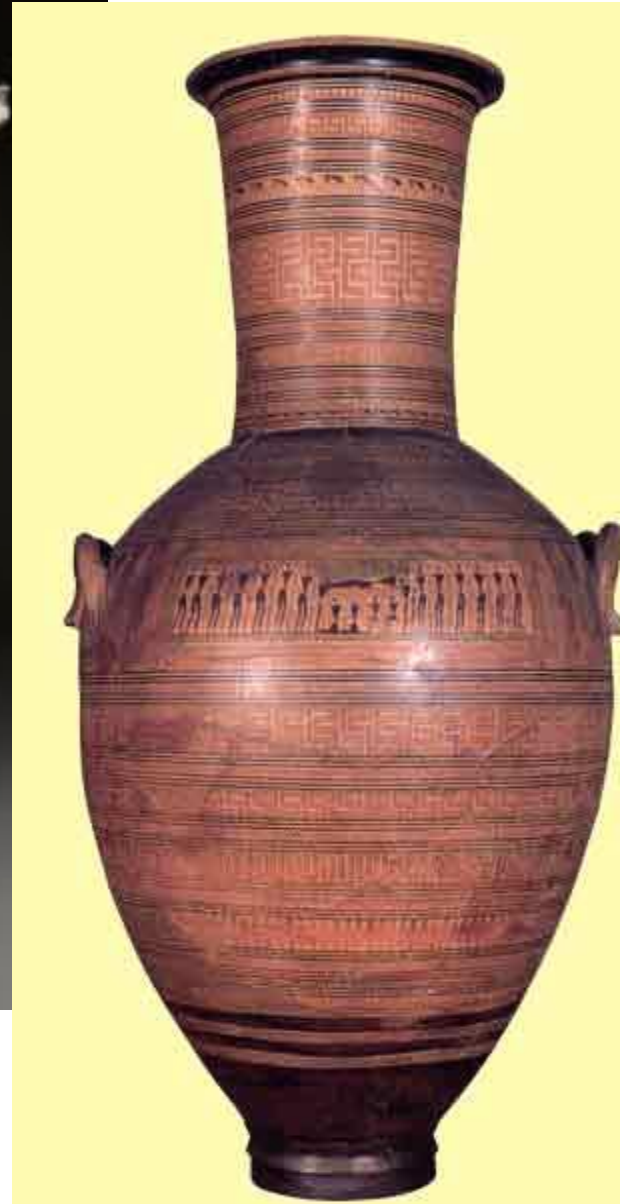
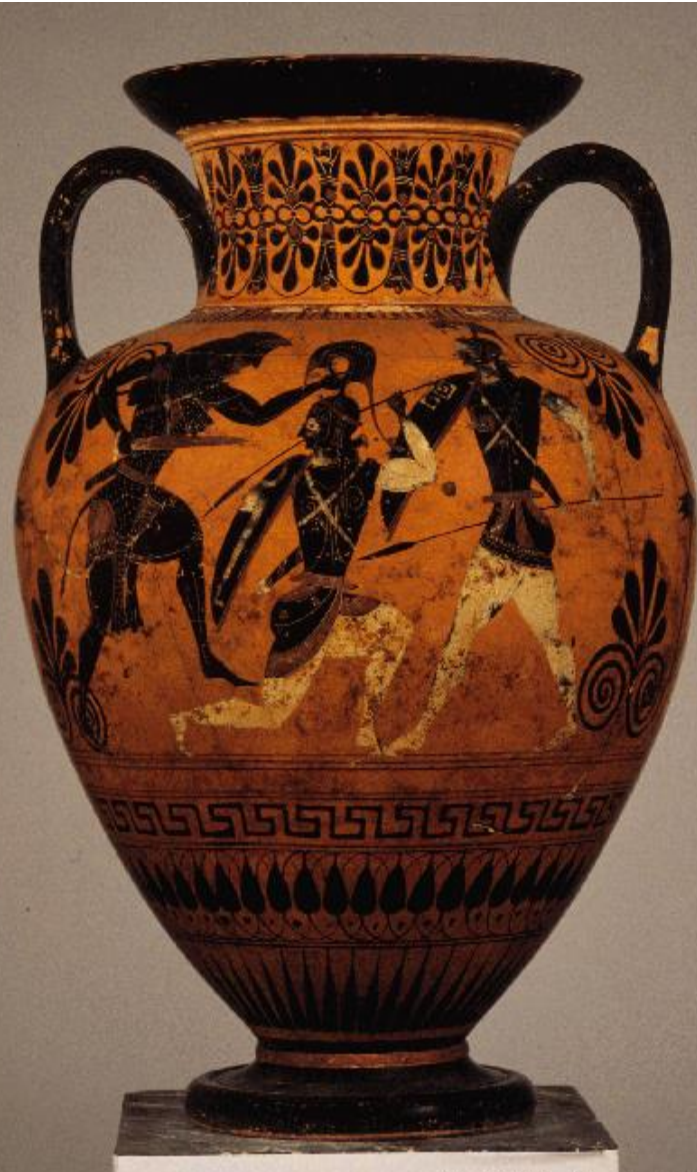


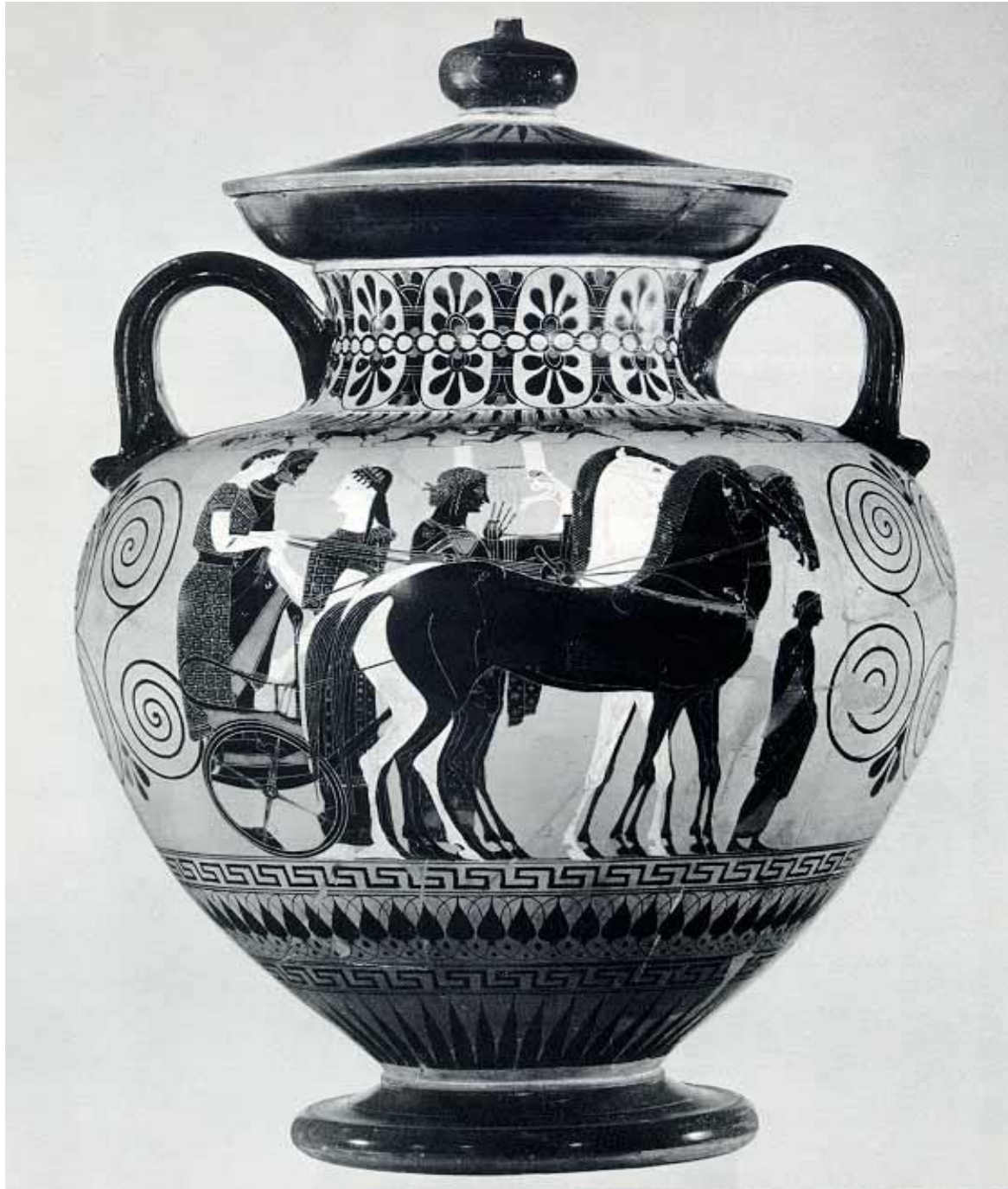
GREEK HISTORY

- ARCHAIC-Geometric designs, slightly smaller size and showed scenes of everyday life to mythology, and legends
- CLASSICAL- Humans were the main theme, strive for the perfect ideal person, beautiful, balanced and harmonious. Followed the same above themes
- HELLENISTIC-became world know through Alexander the Great conquests. Showed the more real emotional side of humanity. Was very ornate and elaborate in theme and design. High in action and force.



STYLES OF GREEK POTTERY







Discus-
Thrower by
Myron.
450 BC