



EXPRESSIONISM

A NEW ERA

INTRODUCTION

ARTISTS

PAINTING TECHNIQUES

CHARACTERISTICS

INTRODUCTION

The background is a painting in an expressionist style, characterized by dark, swirling, and textured brushstrokes. The color palette is dominated by dark blues, greys, and blacks, with a prominent, bright, glowing light source in the center, creating a dramatic and somewhat somber atmosphere. The overall composition is dynamic and emotional, typical of the German Expressionist movement.

- Where

The Expressionism
movement started in
Germany



DENMARK

BALTIC SEA

NORTH SEA

POLAND

NETHERLANDS

GERMANY

CZECHOSLOVAKIA

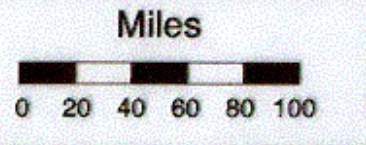
AUSTRIA

SWITZERLAND

ITALY

SLOVENIA

CROATIA



High Angel



Rhine

Elbe

Weser

Emme

Saale

Main

Donau

Danube

Rhein

Rhine

Bodensee

Alpen

Alpen

Alpen

Alpen



**WHEN:
German
Expressionism
Started In
The Early 1900's
And Ended About The 1940's**

Famous Artists of Expressionism

- Franz Marc
- Wassily Kandinsky
- Pablo Picasso
- Henry Matisse
- Max Beckman
- Edvard Munch
- Kathe Kollwitz
- Marc Chagall
- Ernest Nolde
- Henry Rousseau

Artists of Expressionism



Franz Marc

Wassily Kandinsky

Pablo Picasso

Henry Matisse

Max Beckman

Edvard Munch

Kathe Kollwitz

Marc Chagall

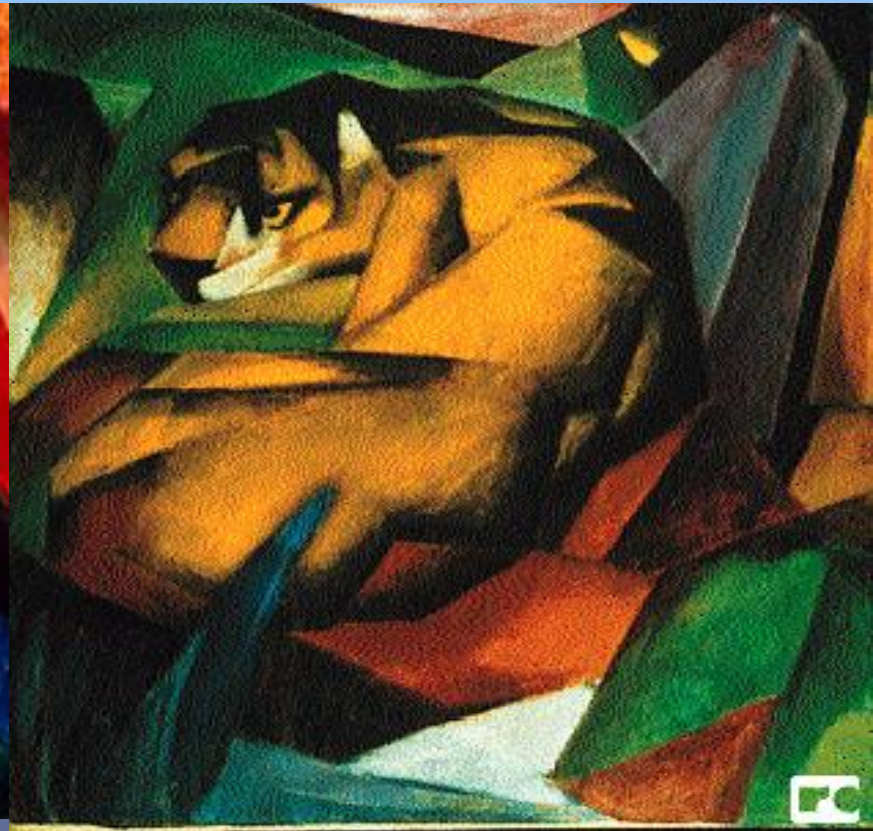
Ernest Nolde

Henry Rousseau

Franz Marc



The Blue Horses



The Tiger

PICASSO



EDVARD MUNCH



KOLLWITZ



CHARACTERISTICS

1. USE OF COLOR TO SHOW EMOTIONS
2. SHOWS STRONG EMOTIONS/EVOKES EMOTION IN VIEWERS.
3. USE OF OVER LAPPING/LAYERING AND LOOSE BLENDING FOR THE PAINTING TECHNIQUES
4. DISTORTION/EXAGGERATION OF COLOR AND FORM
5. BLACK OUTLINE TO UNIFY THE PICTURE

FAUVE ARTIST



CONTEMPORARY EXPRESSIONIST ARTISTS



FRED TOMASELLI-2005



KEHINDE WILEY



ASIAN EXPRESSIONISM



PAINING PROJECT:

CREATE A
SELF PORTRAIT IN
THIS STLYE OF
PAINTING!

ALTERNATIVE THEMES

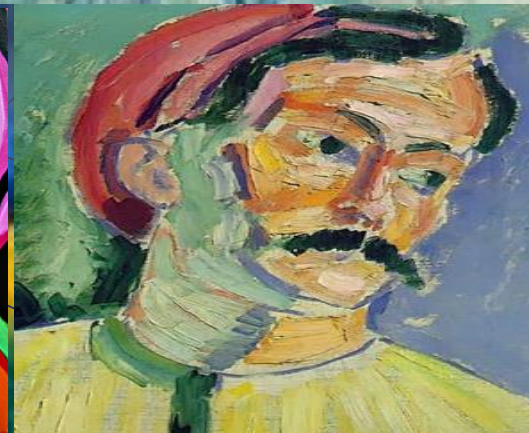
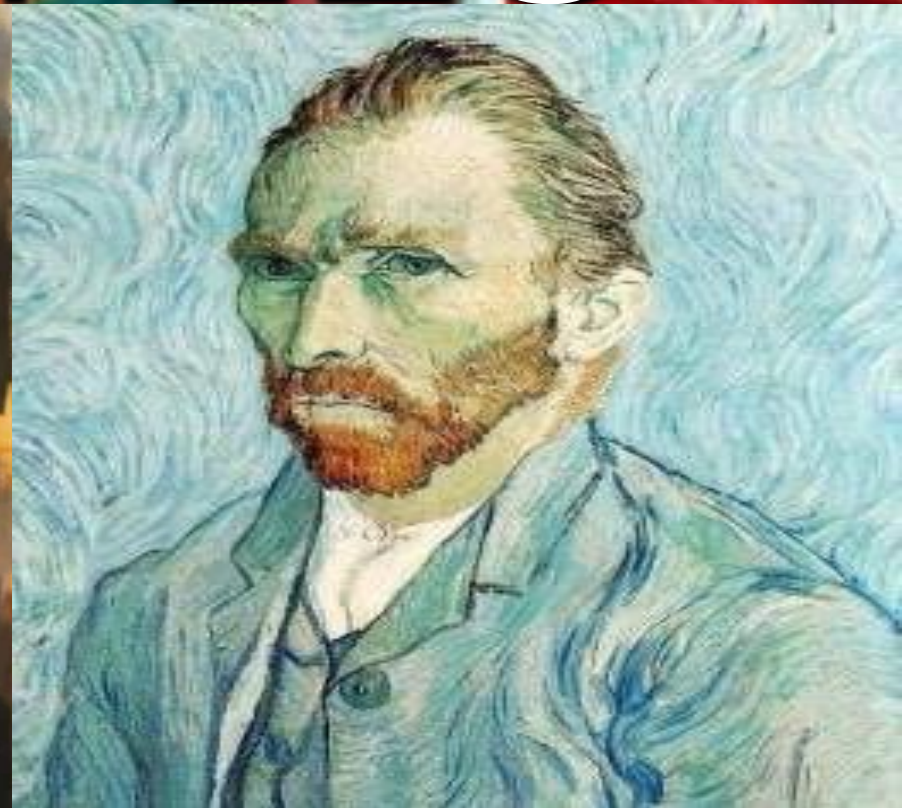
The background is a colorful, abstract painting with a grid overlay. The colors are primarily red, blue, and yellow, with some green and white. The grid consists of small, dark blue dots connected by thin, light blue lines, creating a mesh-like pattern over the entire image.

1. A CURRENT ISSUE YOU FEEL STRONGLY ABOUT.
2. TWEAK A FAMOUS EXPRESSIONISM WORK OF ART.
3. THEME OF CULTURE, YOURS OR CHOOSE ANOTHER.
4. CHOICE YET FOLLOW ASSIGNMNET REQUIREMENTS.

EXAMPLES



EXAMPLES



EVALUATION / REFLECTION QUESTIONS

1. ANALYZE HOW THE DESIGN OF THE ARTWORK IS CREATED WHAT PAINTING TECHNIQUES DID THEY USE?
2. WHAT IS THIS ARTWORK EXPRESSING?
3. WHAT IS YOUR PERSONAL OPINION OF THIS ARTWORK?
4. WHAT INFORMATION DID YOU LEARN ABOUT THIS ART PIECE OR ARTIST?

REQUIREMENTS

FOLLOW THE STYLE OF EXPRESSIONISM

1. SHOW OF STRONG EMOTION.
2. UNIQUE SUBJECTIVE COLOR.
3. EXAGGERATION, DISTORTION OF FORM.
4. LOOSE BLENDING & LAYERING.
5. BLACK OUTLINING.

STEPS TO FOLLOW

1. BRAINSTORM YOUR IDEA FOR YOUR EXPRESSIONISM PROJECT.
2. RESEARCH MASTER ARTIST COLLECT IMAGES AND PUT IN PHOTO ALBUM.
3. COLLECT SUBJECT RELATED IMAGES TO INSPIRE YOURSELF PLACE IN ALBUM.
4. COLLECT OTHER PHOTOS AS NEEDED
5. DRAW ROUGH DRAFT/THUMBNAIL DESIGNS FOR YOUR IDEA IN SKETCHBOOK