

COIL POTS

Art 7

Mrs. Bechtol



5 Stages of Clay

- *Plastic-*
- **Leather-hard-**
- **Green ware/Bone Dry-**
- **Bisque-ware-**
- **Glaze-ware-**



Be Inspired. . .FORM



COLLECT 15 COIL/PINCH VESSEL IMAGES



Cultural Inspiration

Lakota



North African



Chinese



Norwegian



WHAT WILL YOU MAKE?



PINCH POT FORMS



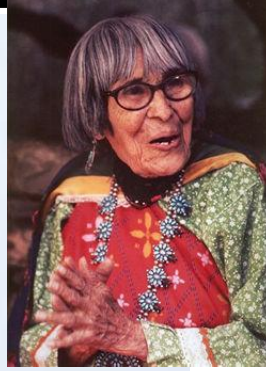
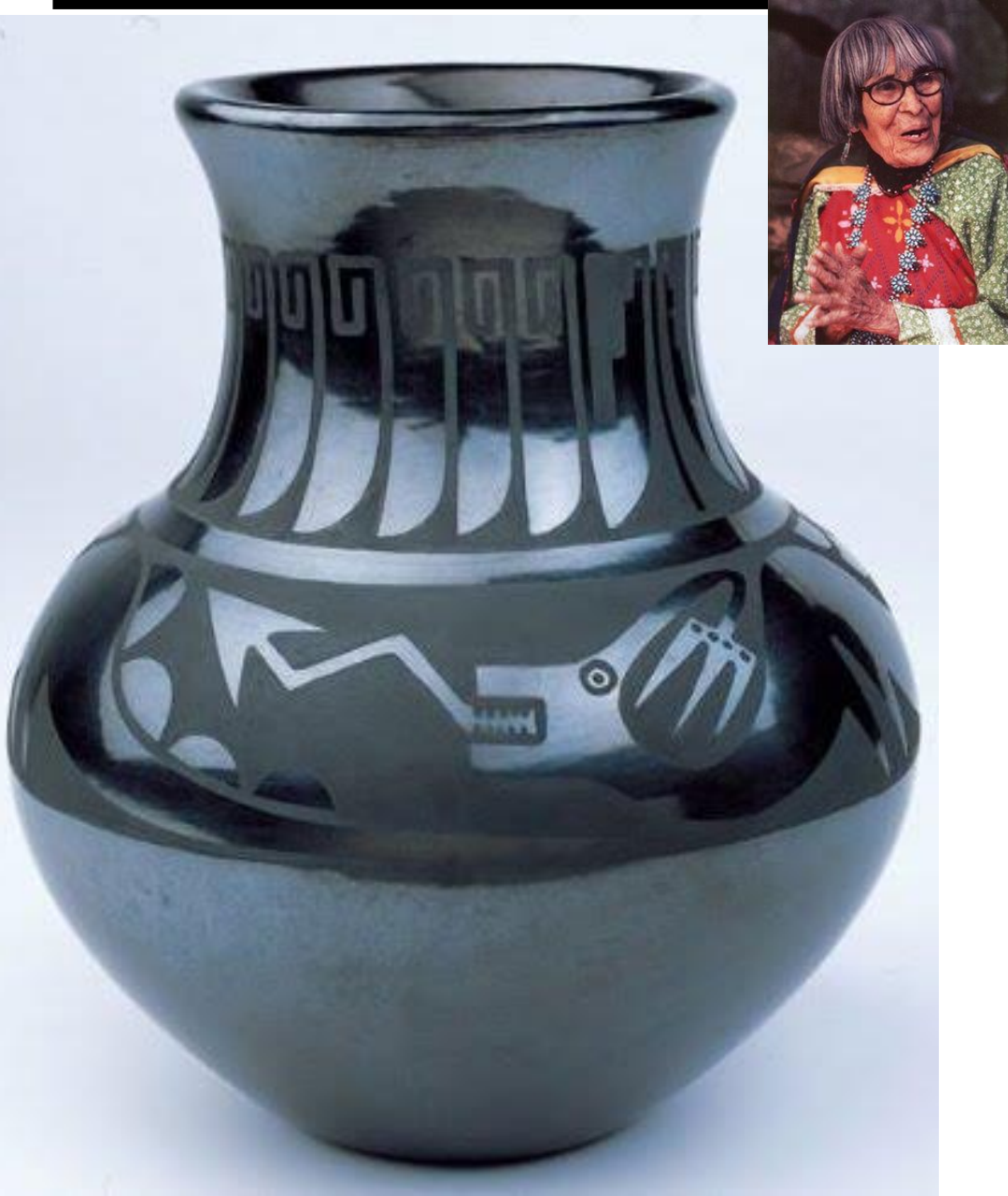
VIDEO'S TO WATCH FOR PINCH POTS

- <https://www.youtube.com/watch?v=5UL5fQtO6qk> BEGINNING PINCH POT
- https://www.youtube.com/watch?v=7CY_iAf8JAI MORE ADVANCED PINCH FORMS
- <https://www.youtube.com/watch?v=0-YQvVnKcWA> NEIL PATTERSON LOSE APPROACH
- <https://www.youtube.com/watch?v=KjhnLu36j4A> IN GREAT DETAIL
- <https://www.youtube.com/watch?v=MlSeEBGHCFY> DIFFERENT KINDS OF FORMS

How to create feet/foot

- <https://www.youtube.com/watch?v=mGxSyiQlznk> feet 1:43 minutes
- <https://www.youtube.com/watch?v=0-YQvVnKcwA> coil bottom 10:00

MARIA MARTENEZ



- How is this artist using balance in the design of this ceramic artwork?
- What elements of art do you see that creates the use of balance?
- What could be the meaning of these images
- How was this made?
- What can I learn from this work?

CREATIVE PROCESS

- Study master artist
- Visual research-collect images/watch how to video's
- Plan-Draw out sketch/Design
- Learn material processes
- Create project/watch process video's again
- Get feedback from peers/family and teacher
- Revise/improve work



C-O-I-L Process

- C-Create your base
- O-One even thickness
- i- Itch and Ick (a.k.a score and slip)
- L-Layer your coils to create your pot-
make sure to smooth along the way



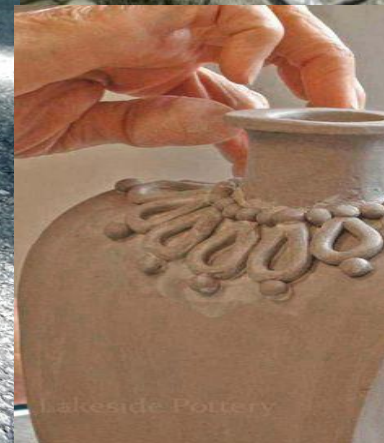


↑
SCORE

↑
SLIP

WHAT SURFACE DESIGN?

- COIL
- ADDITIVE
- STAMPING
- CARVING



VIDEO'S FOR COIL VESSELS

- <https://www.youtube.com/watch?v=2dsOf2uj3Zw> MORE ADVANCED
- <https://www.youtube.com/watch?v=sCLaOLSaNms> NEIL PATTERSON
- <https://www.youtube.com/watch?v=kgDd4Rr6FHE> BASIC FORMING
- <https://www.youtube.com/watch?v=bRPookbxzhl> HOW TO MAKE A COIL
- <https://www.youtube.com/watch?v=YB6GFo0M92g> VERY ADVANCED

THINGS TO THINK ABOUT

1. Must be a unique design
2. CORRECT THICKNESS
3. Must display an understanding of symmetry
4. Must use the technique of slip-and-score correctly
5. Must be “finished”



unintentionally rough edges must be smoothed out and the piece suitable for display



*Bird
Coll Pot*
13in Height
5in Diameter
Lizella Clay
Freckled
Brown Glaze

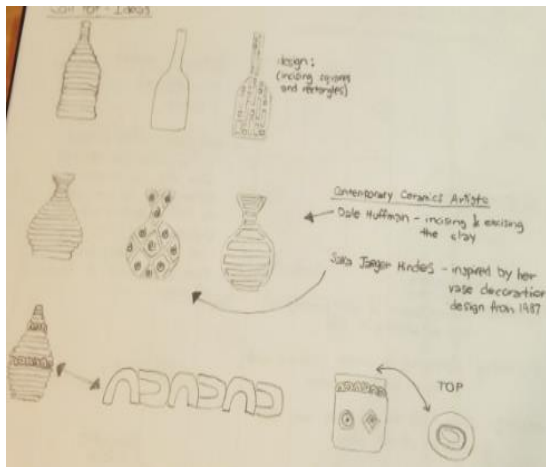
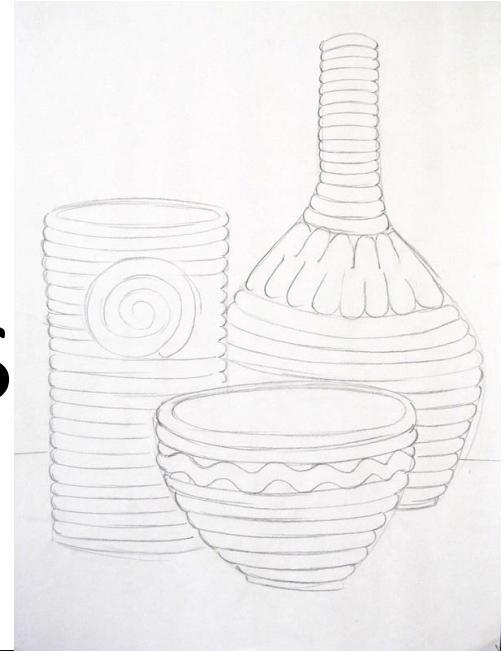


What is wrong with this pot?



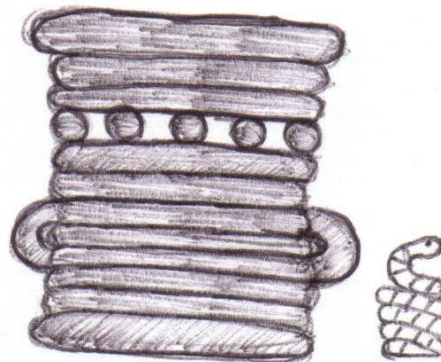
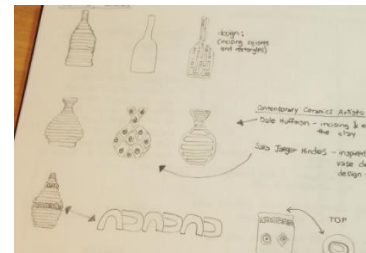
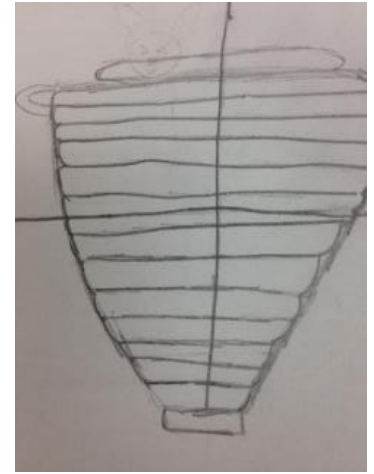
Before You Begin Work Today...

1. Is your SKETCH/design completed?
2. Think about THICKNESS
3. Score and Slip Oath



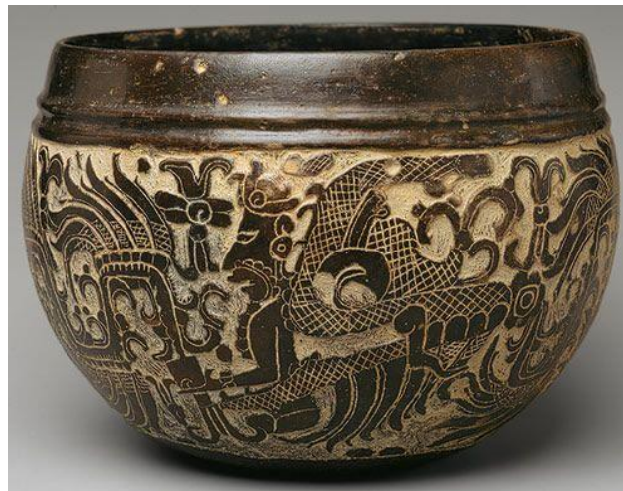
REQUIREMENTS FOR COIL SKETCH

- MUST BE SYMMETRICAL USE GUIDELINES, MAPPING AND MEASURING
- UNIQUE FORM DRAWN WELL
- MUST SHOW SURFACE DESIGN
- DESIGN UNIFIED WITH FORM



4- REQUIREMENTS

- CRAFTSMANSHIP- WELL CONSTRUCTED
- UNIQUE FORM
- CONSISTANT THICKNESS AND SYMMETRICAL
- UNIFIED DESIGNS WITH THE FORM



WHEEL THROW WORK



JUST FOR FUN/NOT REQUIRED

- HOW TO THROW ON THE WHEEL VIDEO'S
- <https://www.youtube.com/watch?v=M9-hAJ8IrmU> BOWL
- <https://www.youtube.com/watch?v=NVP4VVQxeJ8> CENTERING CLAY
- <https://www.youtube.com/watch?v=pJHdEcSHlgA> STRAIGHT CYLINDER
- <https://www.youtube.com/watch?v=IV2nQk0bW4Q> ADDING A HANDLE
- <https://www.youtube.com/watch?v=y7gBRjx38DI> how to throw a vase

GLAZING

- <https://www.youtube.com/watch?v=BrGtR19W6sQ> Dipping and pouring 3:00 minutes
- <https://www.youtube.com/watch?v=wDa4IprjeAA> Triple dip 10 minutes
- https://www.youtube.com/watch?v=4yGp4jZ9j_o Very fancy 28 minutes



GLAZE CHART

