

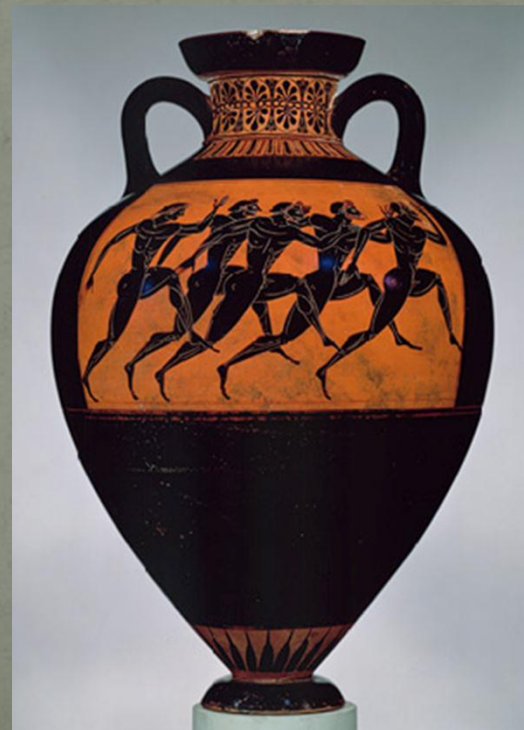
Greek Pottery for Today

Taking old school traditions and using them in new school contexts.



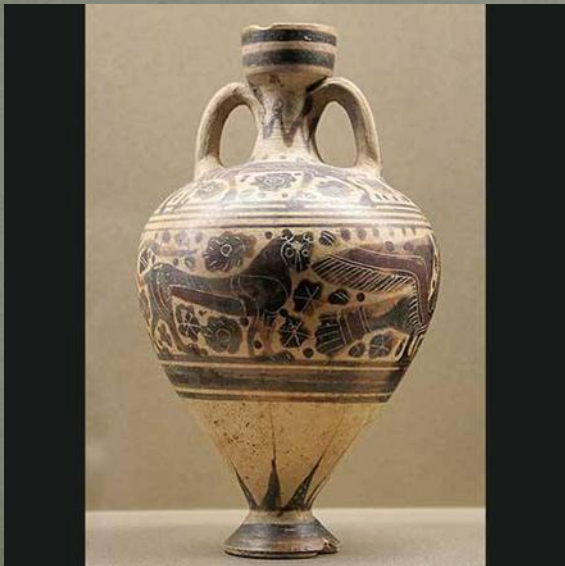
Pottery: Unintentional History Records

- Pottery stands the test of time because of its durability
- Tells us a lot about history, cultural norms, and religious beliefs.



Greek History in Three Minutes

- 3 main periods of Greek History
- ARCHAIC- 700BC-490BC
- CLASSICAL- 480BC-323BC
- HELLENISTIC- 323BC-30BC



Archaic

- ARCHAIC-Geometric designs, slightly smaller size and showed scenes of everyday life to mythology, and legends.



Classical

- CLASSICAL- Humans were the main theme, strive for the perfect ideal person, beauty, balance and harmony.



Hellenistic

- HELLENISTIC-became world know through Alexander the Great conquests. Showed the emotional side of humanity. Was very ornate and elaborate in theme and design. High in action and force.



Greek Sculpture Differences

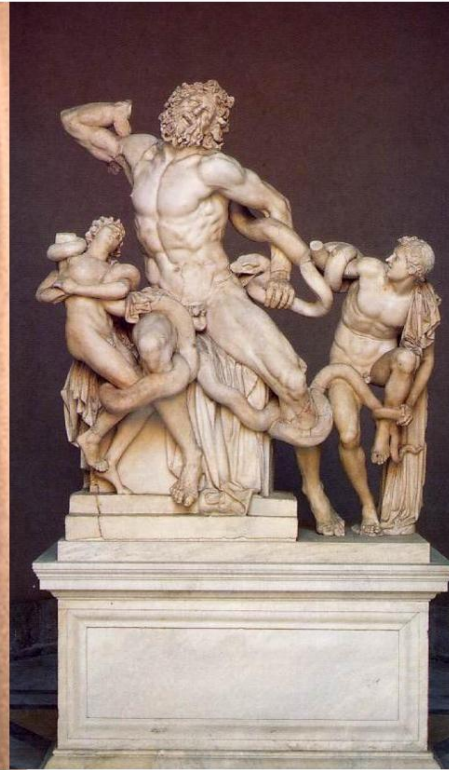
Differences?



Archaic



Hellenic



Hellenistic

Greek Pottery Functions

- Most used for every day uses. (Storing water)
- Some were used for very special ceremonies. (Olympics) (funerary jar)



Every Day Uses

- The “Hydra”- Used for collecting water.
- Didn't have running water
- Needed to fetch fresh water daily
- Functional while being beautiful.



Ceremonial Uses

- Used in original Olympic Ceremonies
- Held very expensive perfumes and oils
- Would hold about a year's wages worth of perfumes and oils!



21st Century Contexts for Ancient Greek Pottery



The Assignment

- Create a pot combining techniques learned already in previous class experiences.

Coil, Slab, Mold, pinch pot...
Applique, carving... what else?



The Assignment Continued

- Use previous techniques and new techniques that we will discover to create Greek-like vessel.
- Can be in form of pot but DOESN'T have to be.
- Can be in the surface design and embellishments.
- The form of your pot can be completely modern.
- We are taking old concepts and applying them to the 21st Century.

Assignment Details

- Your 21st Century Greek Vessel will be 10-15 tall and 6 to 8 inches wide.
- You're required to research Greek pottery, and cultural influences.
- This will be in the homework description.



More Details

- What's shape and form of overall vessel? Why?
- Organic shape or geometric shape? Why?
- Surface designs- Geometric or repeating pattern?
- Everything you do needs to be intentional. It's what artists do.
- Will you tell a story?
 - Literal or symbolic?



- Our New building technique- Slab Pottery
- You'll watch Youtube videos about the technique.
- I'll eventually demonstrate this technique.



More Modern forms you could use.

