

What Do you See?



HOW TO ANALYZE

- LOOK CLOSELY
- HOW IS IT ARRANGED?
- WHAT ELEMENTS DO YOU SEE?
- WHAT PRINCIPLES DO YOU SEE?
- WHAT TECHNIQUES ARE USED?



HISTORICAL AND CULTURAL CONTENT

- WHAT TIME PERIOD IS THIS FROM?
- WHAT WAS THIS CULTURE LIKE? What new techniques?
- WHAT EVENT COULD HAVE INFLUENCED THIS PIECE?
- WHAT PURPOSE OR FUNCTION DOES THIS PIECE SERVE?
- WHY IS THIS PIECE IMPORTANT IN THE HISTORY OF ART?



INTERPRETAION

- LOOK CLOSELY
- USE PERCEIVE HANDOUT
- WHAT DO YOU NOTICE?
- WHAT MOOD DOES IT CREATE?
- WHAT DOES IT REMIND YOU OF
- WHAT DOES IT MAKE YOU WONDER ABOUT?



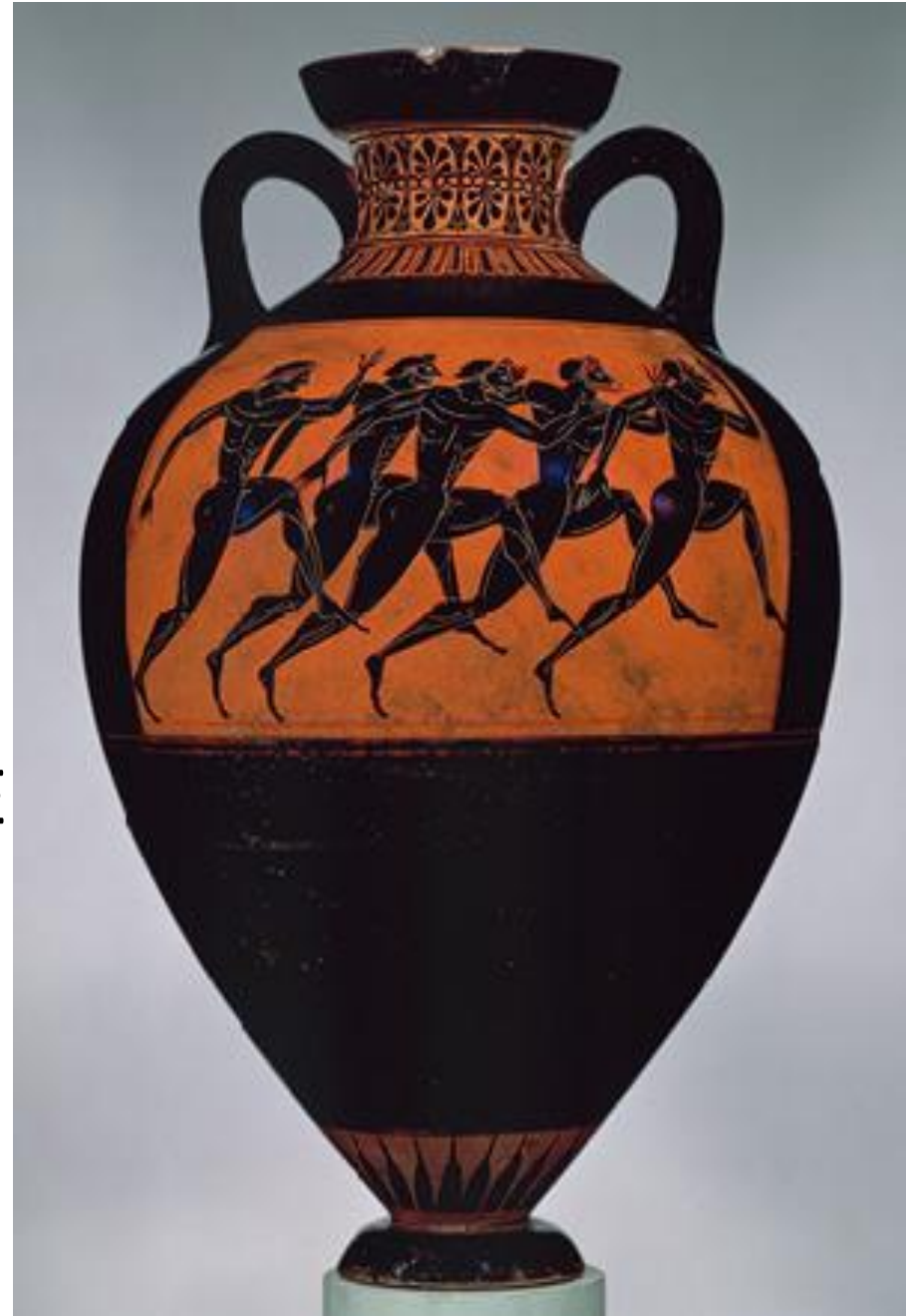
EVALUATION

- GIVE YOUR HONEST OPINION.
- BASE YOUR OPINION ON YOUR KNOWLEDGE OF ART.
- SHOW OFF YOUR UNDERSTANDING OF THIS ART FORM AND MOVEMENT.
- USE LOTS OF ART VOCABULARY- talk about techniques.
- SUPPORT YOUR STATEMENTS WITH OBSERVATIONS YOU NOTICE ABOUT THE WORK.



RESOURCES

- HANDOUTS
- WORKBANK
- MINNEAPOLIS INSTITUTE OF ART
- RESEARCH OTHER FAMOUS MUSUEMS
- ART AND MAN MAGAZINE
- NOTES YOU HAVE TAKEN & PRIOR KNOWLEDGE



CERAMICS FINAL

- Red figure Hydria
- White Sakkos Painter
- 320 B. C.



CERAMICS FINAL

- Title- “Hydria Vessel”
- Artist- Antinaenes
- Greek origin-6th century B. C.

